

# Fordson Super Dexta





The Netherlands

17-10-2020

## FORDSON SUPER DEXTA

Woodworking with machines and also hand tools **can be dangerous**. Don't start this project without an advanced knowledge about woodworking and (power) tools.

You can make this project with different woodworking machines, but in my opinion you need a saw (I prefer a band saw), a (small) jointer, sanding machine (one type of), a (small) router and a drill press. However there are a lot of ways on how to make this model, there are builders which prefer hand tools and I have seen beautiful examples.

All the parts (template drawings) in this pattern are drawn in a full scale. Sometimes a situation view has a different format scale. There are 30 chapters. You don't necessarily need to start with chapter 1 if you feel like another chapter is more suitable to start with. Feel also free to make extra parts or to remove them. It makes it more personal.

**Important:** First mount 15A in 2G before you glue piece 2G to 2A

Besides the pattern itself there is also:

1. A set of templates in a full scale
2. A PDF with a breakdown overview

I recommend you to use Acrobat Reader for printing as we have experienced scaling issues with other PDF readers. Make sure to **disable** Scale to Fit and **print at 100% scale** for the prints to be exactly the right dimensions. Every template page includes a scale in both metric and imperial units for you to verify that the print has been printed correctly.

It isn't necessary to print all the pages, however It is recommended to print at least the templates. Working with the templates is useful, particularly for those who are common to work with the imperial system, and makes measuring to a minimum.

Use PVAc wood glue and/or super glue (cyanoacrylate)

Small dowels of 2 mm are toothpicks. You can however also use smaller toothpicks, but be aware to make a corresponding hole.

All drawing sizes are in metric. This means that also the holes are in metric. You can however use imperial sized drill bits and dowels.

- Use a **3/32"** drill bit/dowel (2.38 mm) where a **2.5 mm** hole is drawn.
- Use a **1/8"** drill bit/dowel (3.17 mm) where a **3 mm** hole is drawn.
- Use a **5/32"** drill bit/dowel (3.96 mm) where a **4 mm** hole is drawn.
- Use a **3/16"** drill bit/dowel (4.76 mm) where a **5 mm** hole is drawn.
- Use a **1/4"** drill bit/dowel (6.35 mm) where a **6 mm** hole is drawn.
- Use a **5/16"** drill bit/dowel (7.94 mm) where a **8 mm** hole is drawn.
- Use a **1 1/4"** drill bit (31.75 mm) where a **30 mm** hole is drawn.
- Use a **1 1/2"** drill bit (38.1 mm) where a **40 mm** hole is drawn.
- Use a **2** drill bit (50.8 mm) where a **50 mm** hole is drawn.

**When you are using the templates and glue them (with spray glue or a glue stick) on the wood, almost no measuring is needed!**

When you see shortcomings please send me an email ([dutchypatterns@gmail.com](mailto:dutchypatterns@gmail.com)) so I may improve the pattern. A response is appreciated.

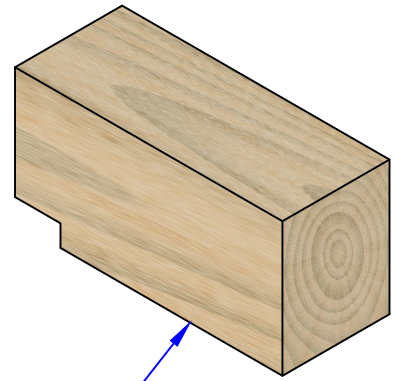
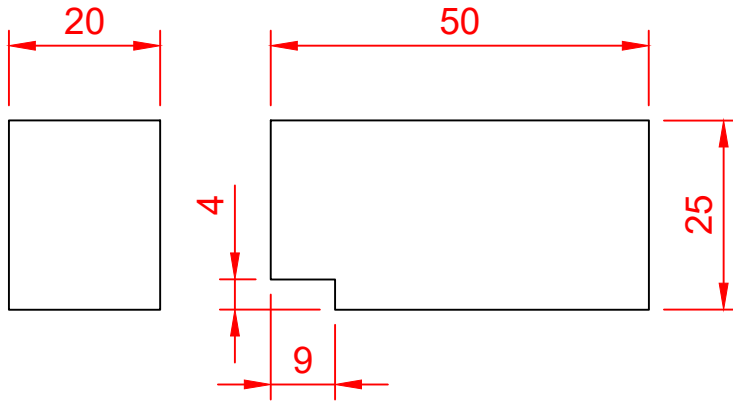
**Enjoy building.**

Dutchy

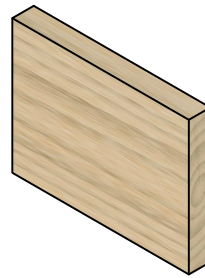
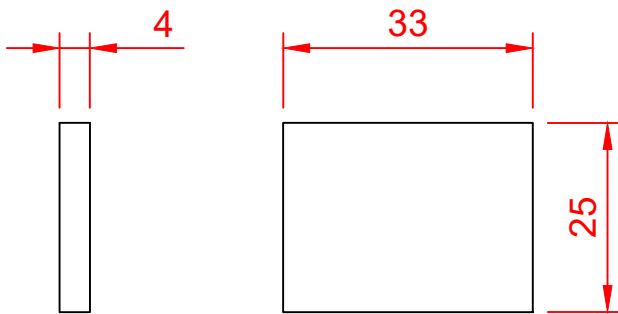
**Without permission duplication and/or distribution of this pattern in whole or in part, in any manner, is prohibited.**



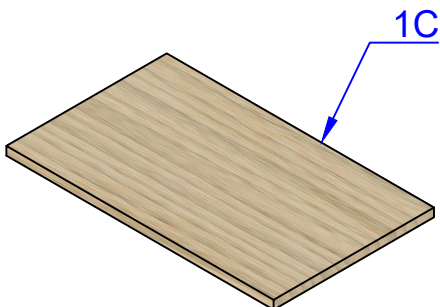
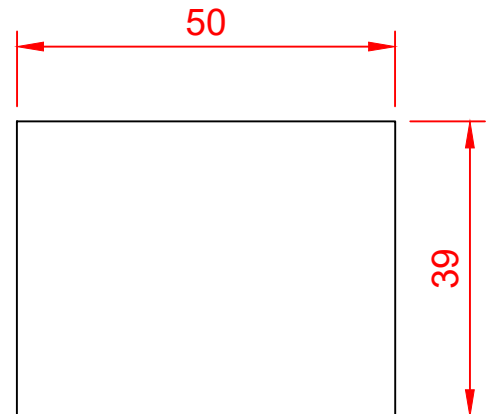
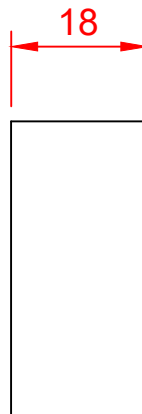
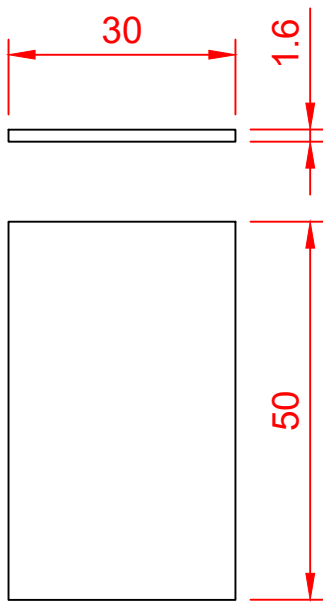
# 01 ENGINE



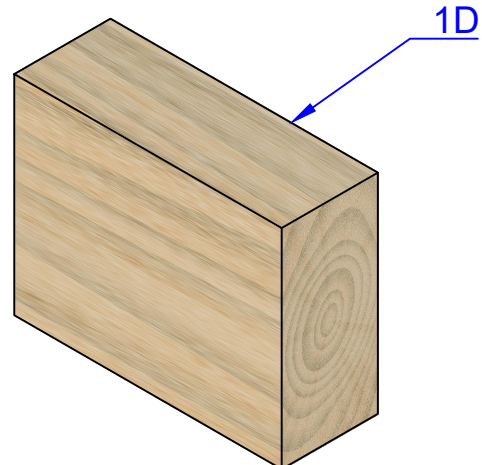
1A



1B (Make 2)

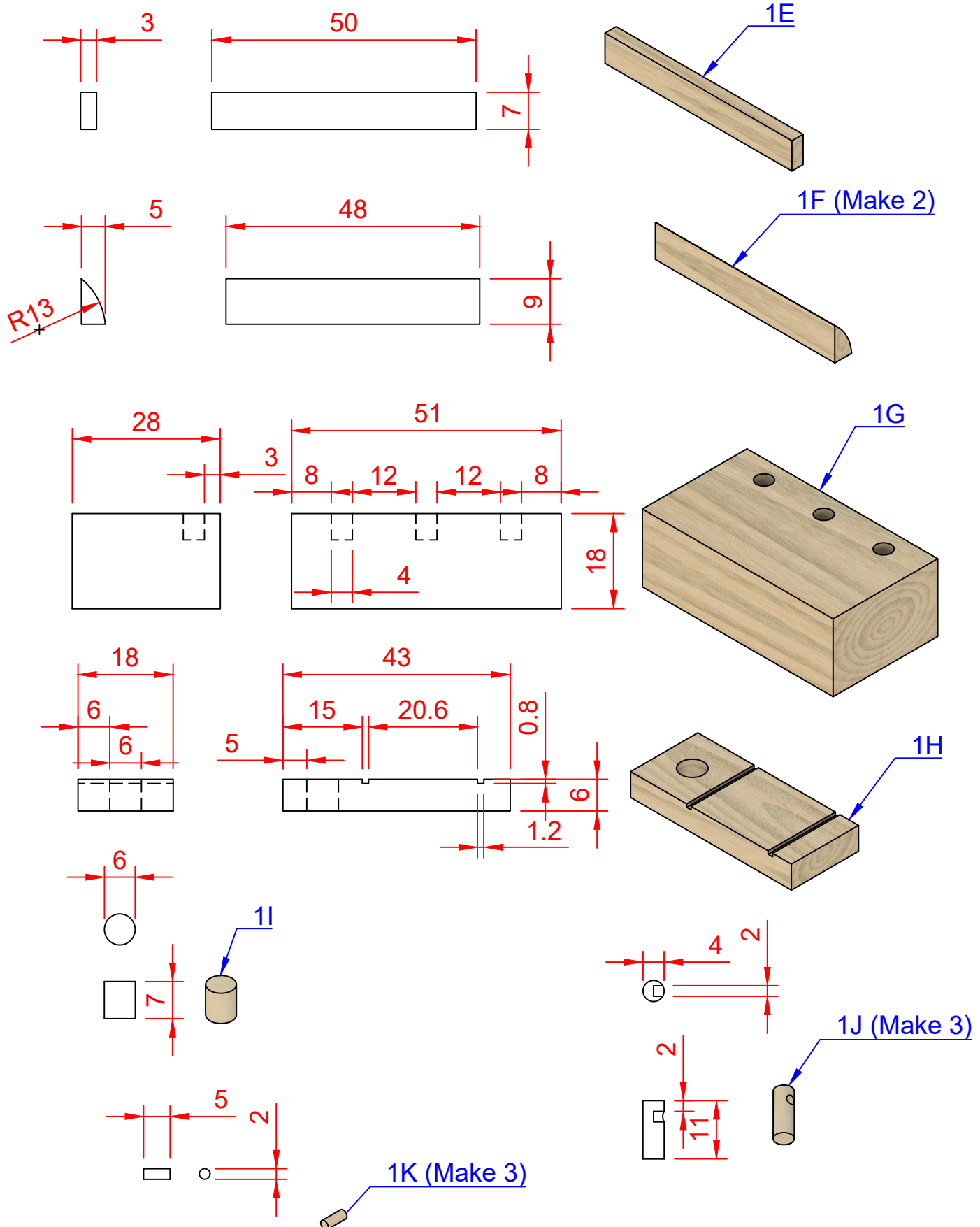


1C

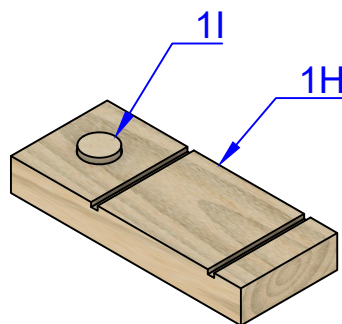
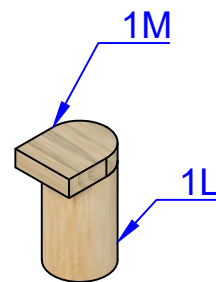
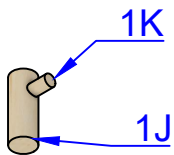
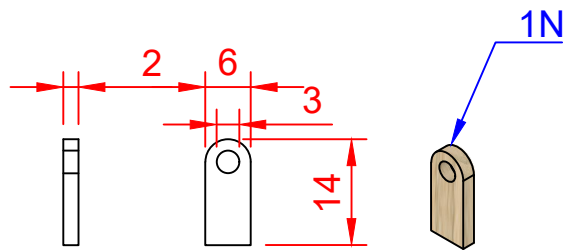
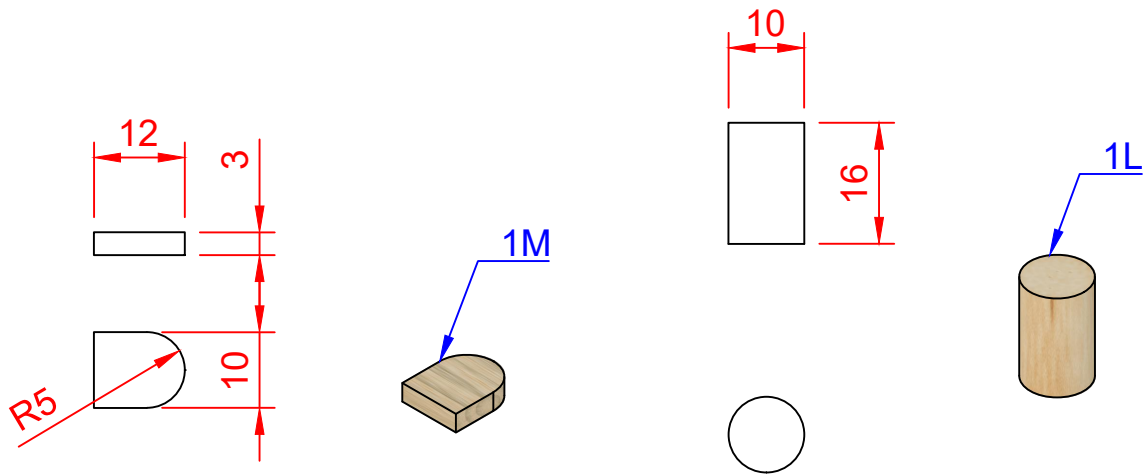


1D

# 01 ENGINE

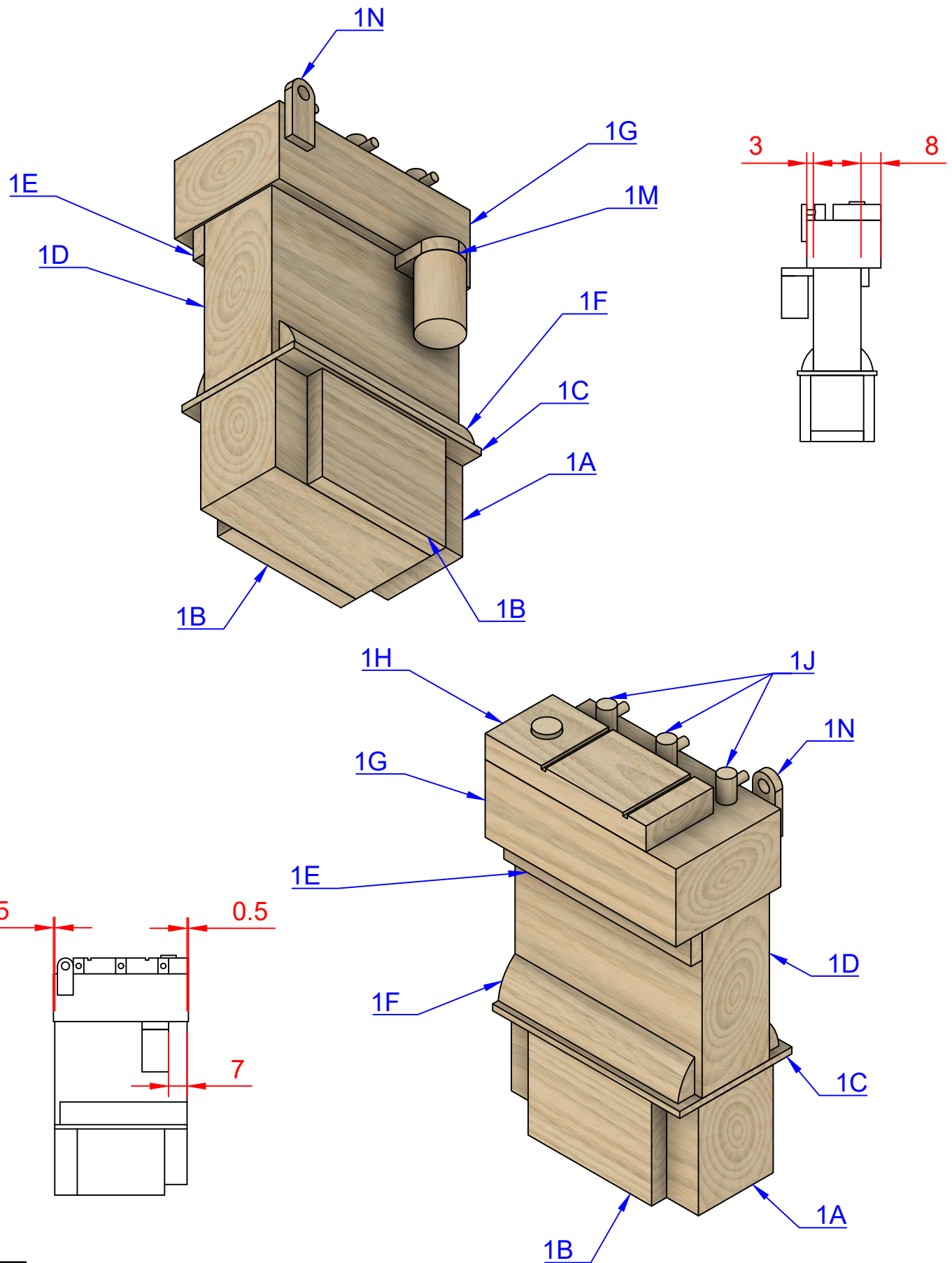


# 01 ENGINE



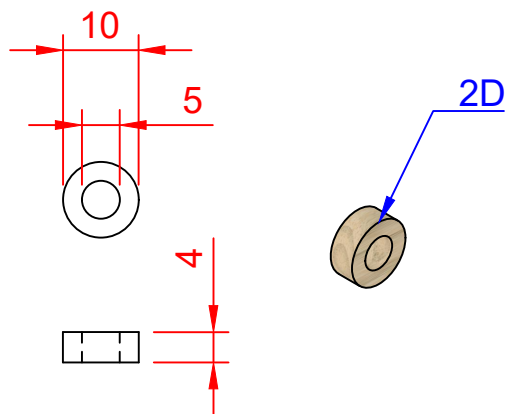
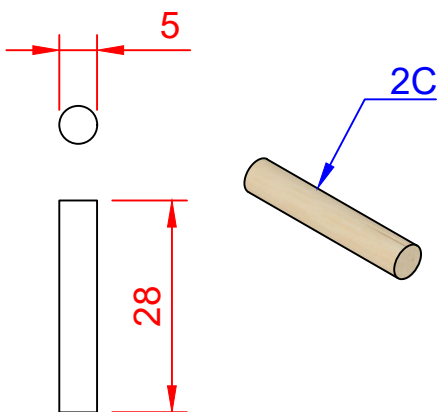
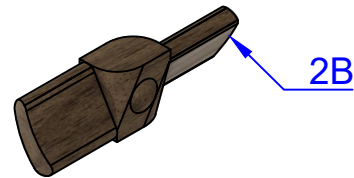
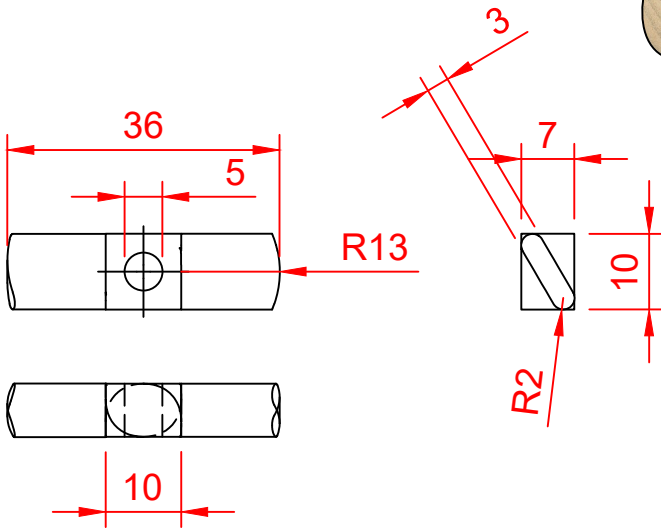
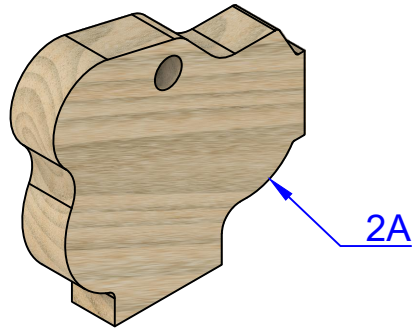
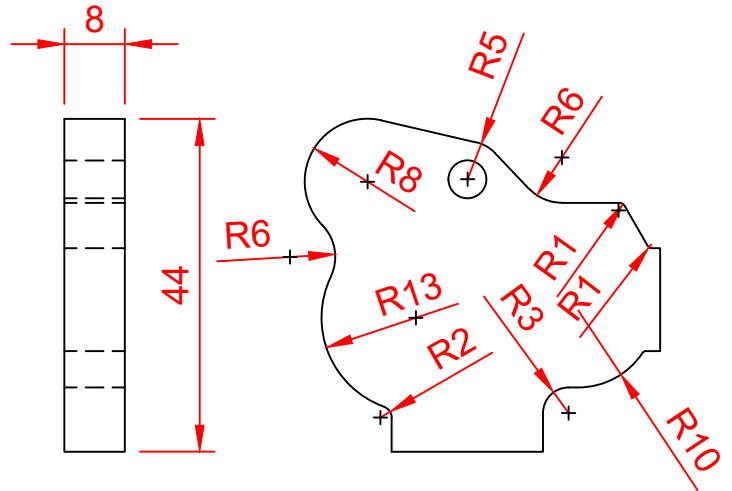
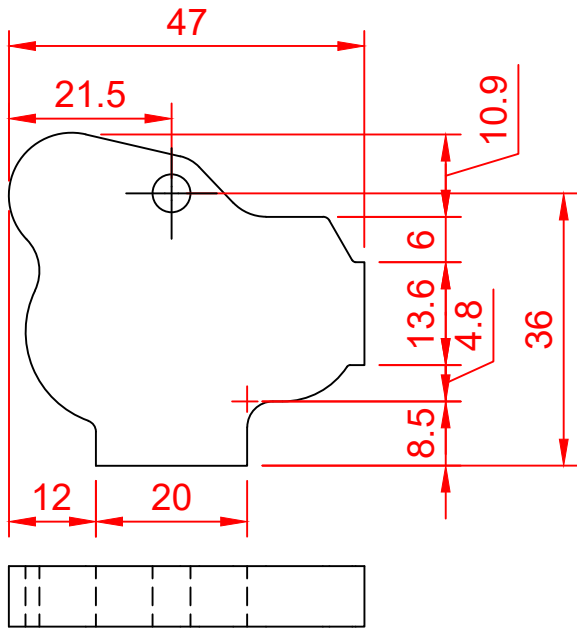


# ASSEMBLED



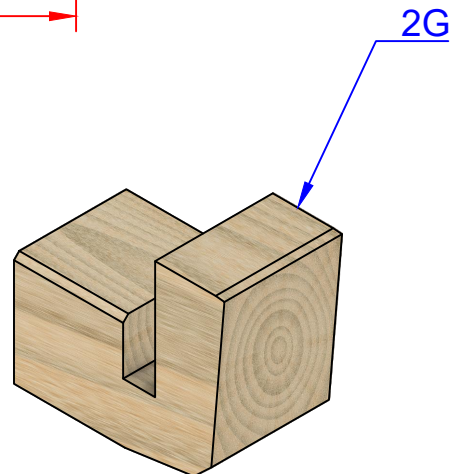
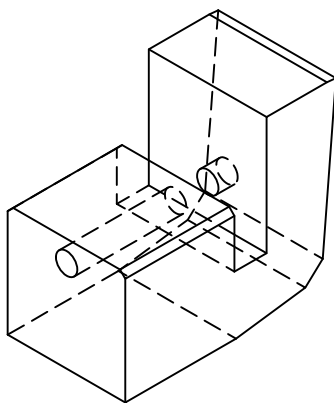
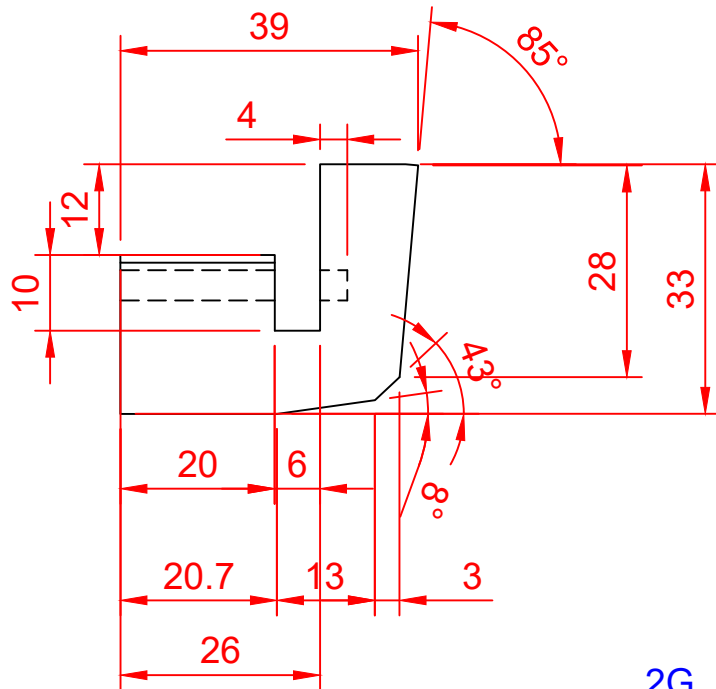
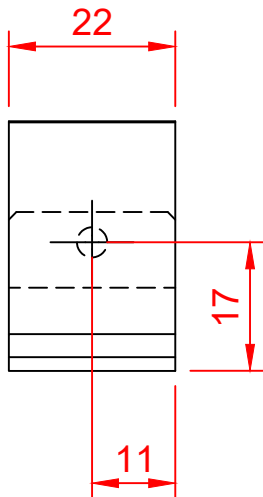
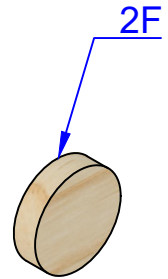
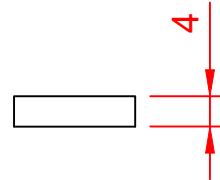
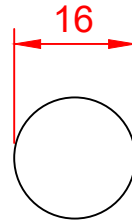
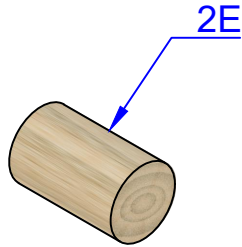
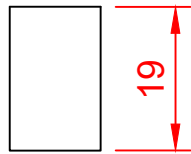
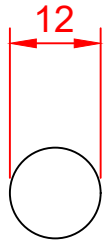


# 02 TIME GEAR, FAN & AXLE MOUNT

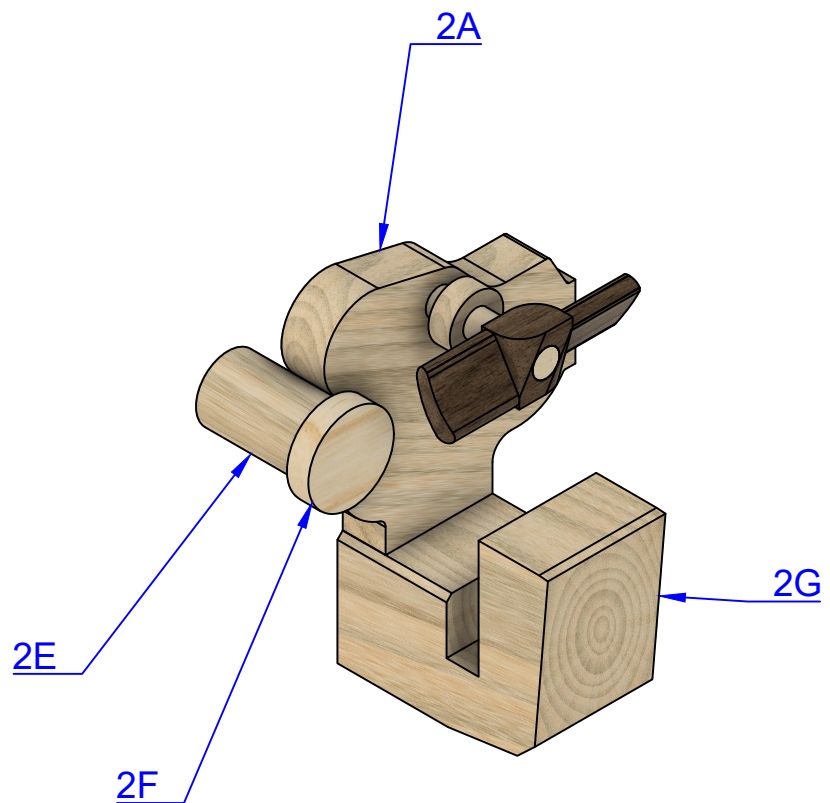
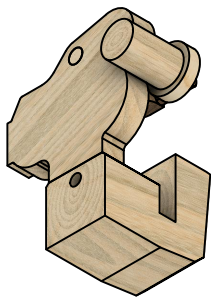
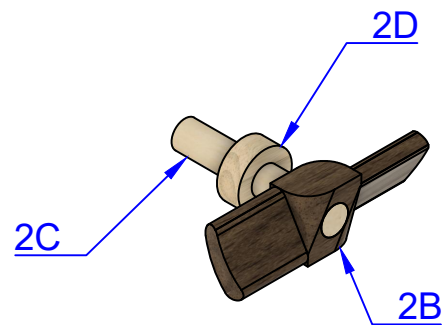
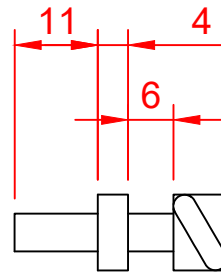
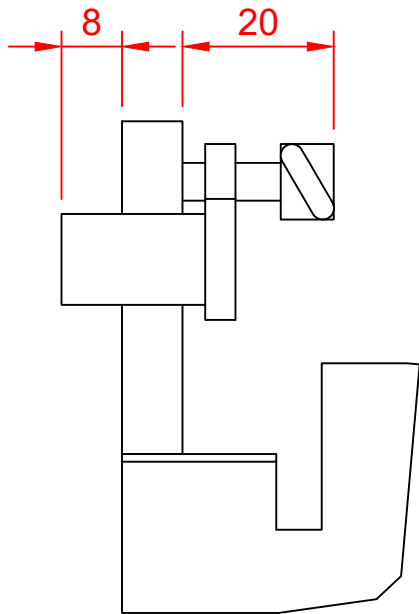




# 02 TIME GEAR, FAN & AXLE MOUNT

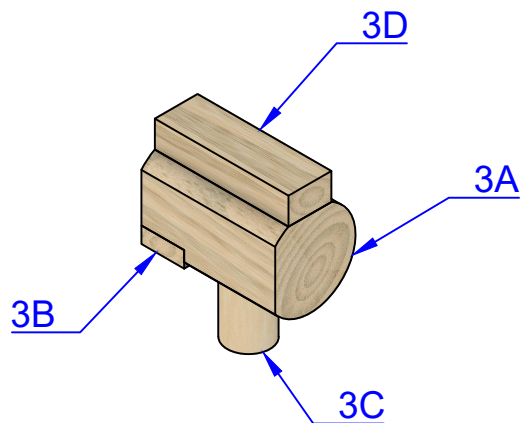
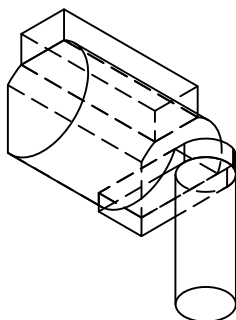
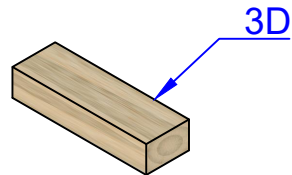
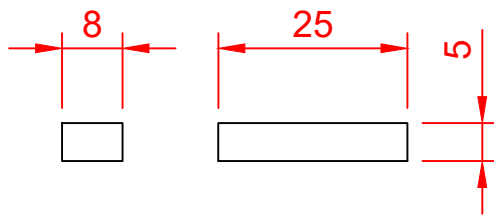
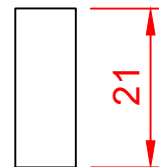
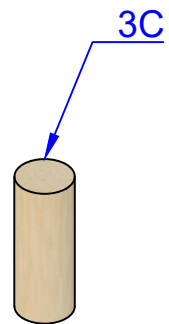
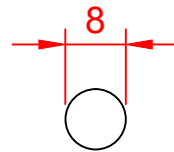
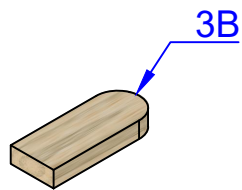
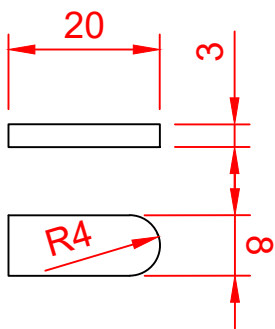
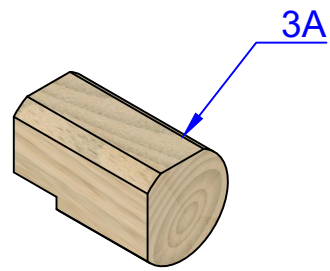
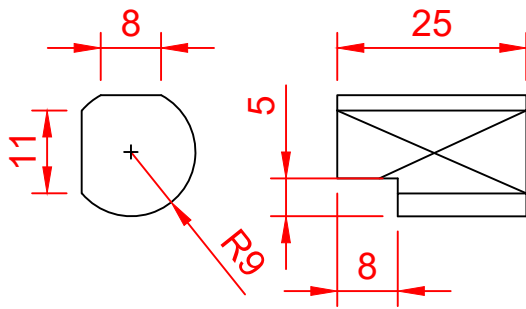


# ASSEMBLED

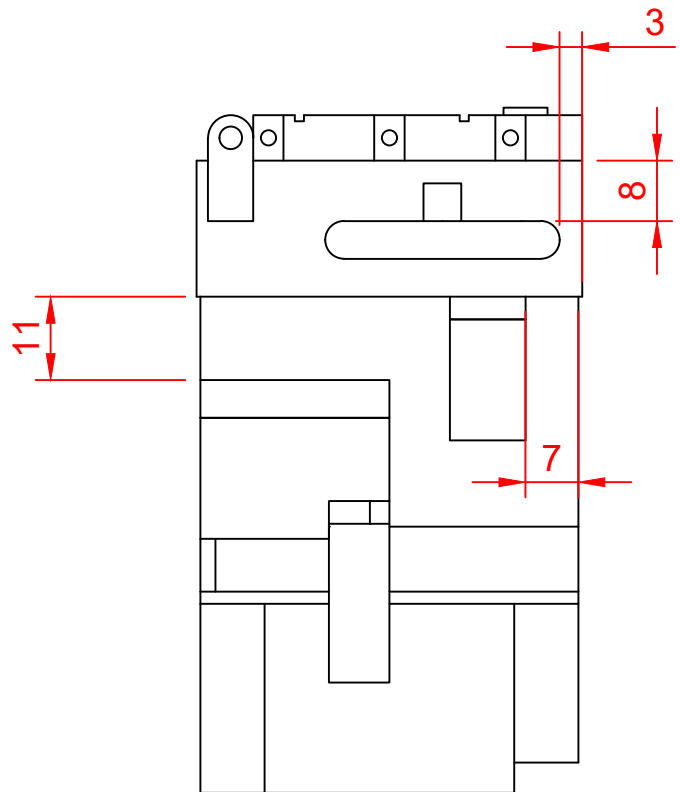
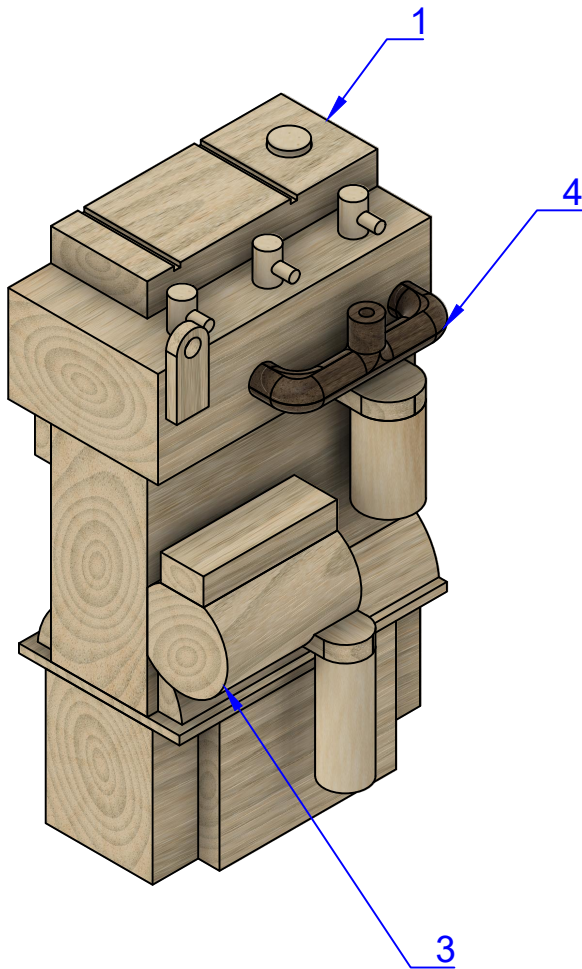
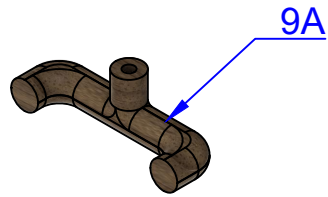
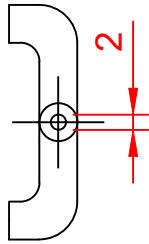
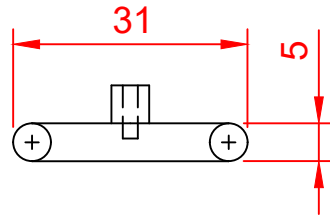
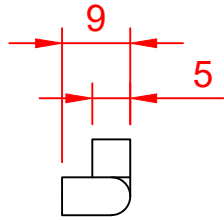




# 03 FUEL PUMP



# 04 MANIFOLD

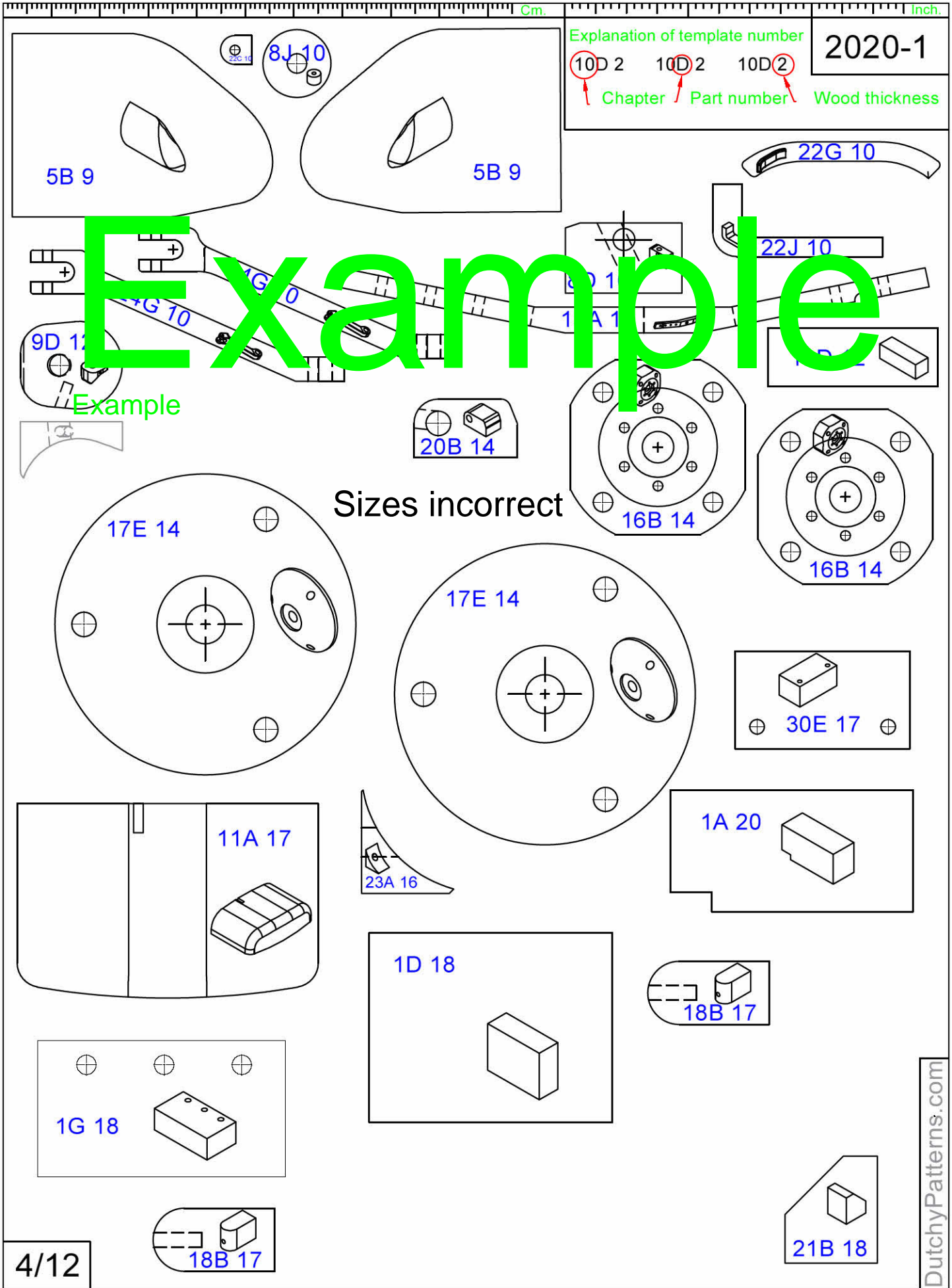


# Fordson Super Dexta

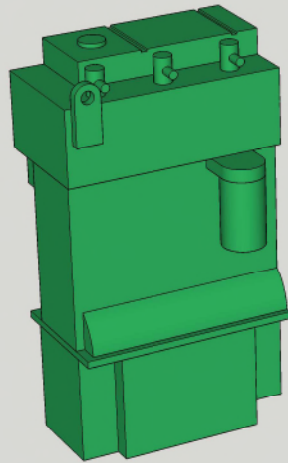


# Templates

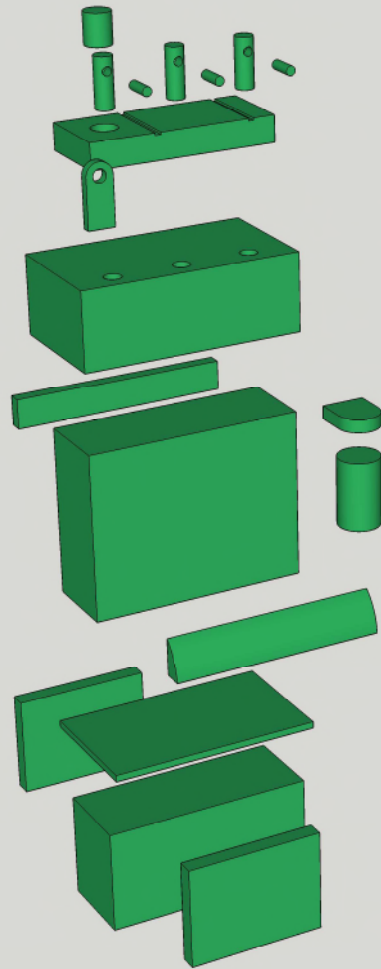


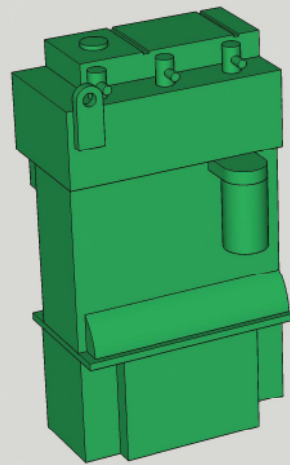


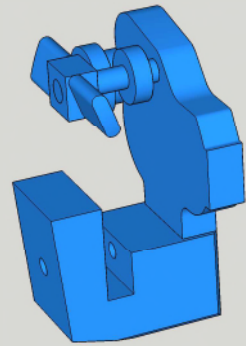




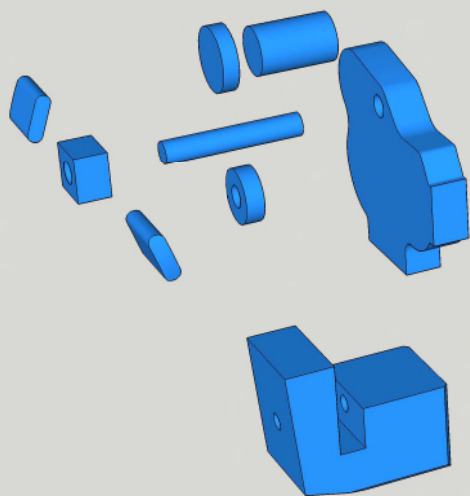
01 - Engine

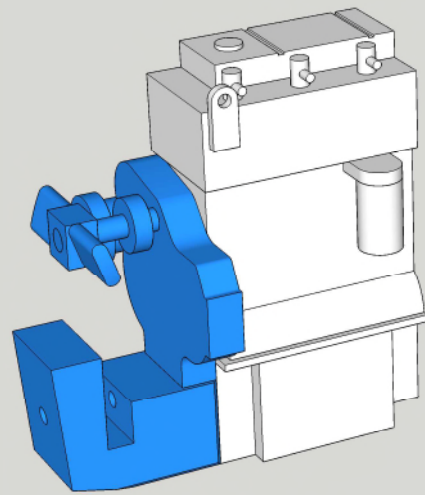




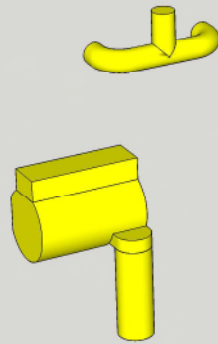


## 02 - Time Gear









## 03 & 04 - Fuel Pump & Manifold

