



Peter's C CAB



The Netherlands

06-02-2021

## Peter's C CAB

Woodworking with machines and also hand tools **can be dangerous**. Don't start this project without an advanced knowledge about woodworking and (power) tools.

This model is made by Peter from Australia and this is what he wrote about his plan.

*Early 1920's "C Cab Trucks" were a lower cost alternative for "Ford Model TT" proving very popular in that time. The "C Cab" was made in utility backs, tray, stake, and in delivery van configurations. The sided tray top could have been used in a variety of ways from the farm to deliveries.*

*This toy replica of that series of trucks is designed as a strong playable wooden toy for children to use their imagination and enjoy many hours of fun and play.*

*Enjoy making your own version of the truck with these plans, personalize it, then give it to a child for your reward, a smile.*

You can make this project with different woodworking machines, but in my opinion you need a saw (I prefer a band saw), a (small) jointer, sanding machine (one type of), a (small) router and a drill press. However there are a lot of ways on how to make this model, there are builders which prefer hand tools and I have seen beautiful examples.

All the parts (template drawings) in this pattern are drawn in a full scale. Sometimes a situation view has a different format scale. There are 15 chapters. You don't necessarily need to start with chapter 1 if you feel like another chapter is more suitable to start with. You can make your own wheels, but if you prefer feel free to buy them. Feel also free to make extra parts or to remove them. It makes it more personal.

Besides the pattern itself there is also:

1. A set of templates in a full scale
2. A PDF with a breakdown overview

I recommend you to use Acrobat Reader for printing as we have experienced scaling issues with other PDF readers. Make sure to **disable** Scale to Fit and **print at 100% scale** for the prints to be exactly the right dimensions. Every template page includes a scale in both metric and imperial units for you to verify that the print has been printed correctly.

It isn't necessary to print all the pages, however It is recommended to print at least the templates. Working with the templates is useful, particularly for those who are common to work with the imperial system, and makes measuring to a minimum.

Use PVAc wood glue and/or super glue (cyanoacrylate)

All drawing sizes are in metric. This means that also the holes are in metric. You can however use imperial sized drill bits and dowels.

- Use a **1/8"** drill bit/dowel (3.17 mm) where a **3 mm** hole is drawn.
- Use a **3/16"** drill bit/dowel (4.76 mm) where a **5 mm** hole is drawn.
- Use a **5/16"** drill bit/dowel (7.94 mm) where a **8 mm** hole is drawn.

**With spray glue you can glue the templates onto the wood.**

When you see shortcomings please send me an email ([dutchypatterns@gmail.com](mailto:dutchypatterns@gmail.com)) so I may improve the pattern. A response is appreciated.

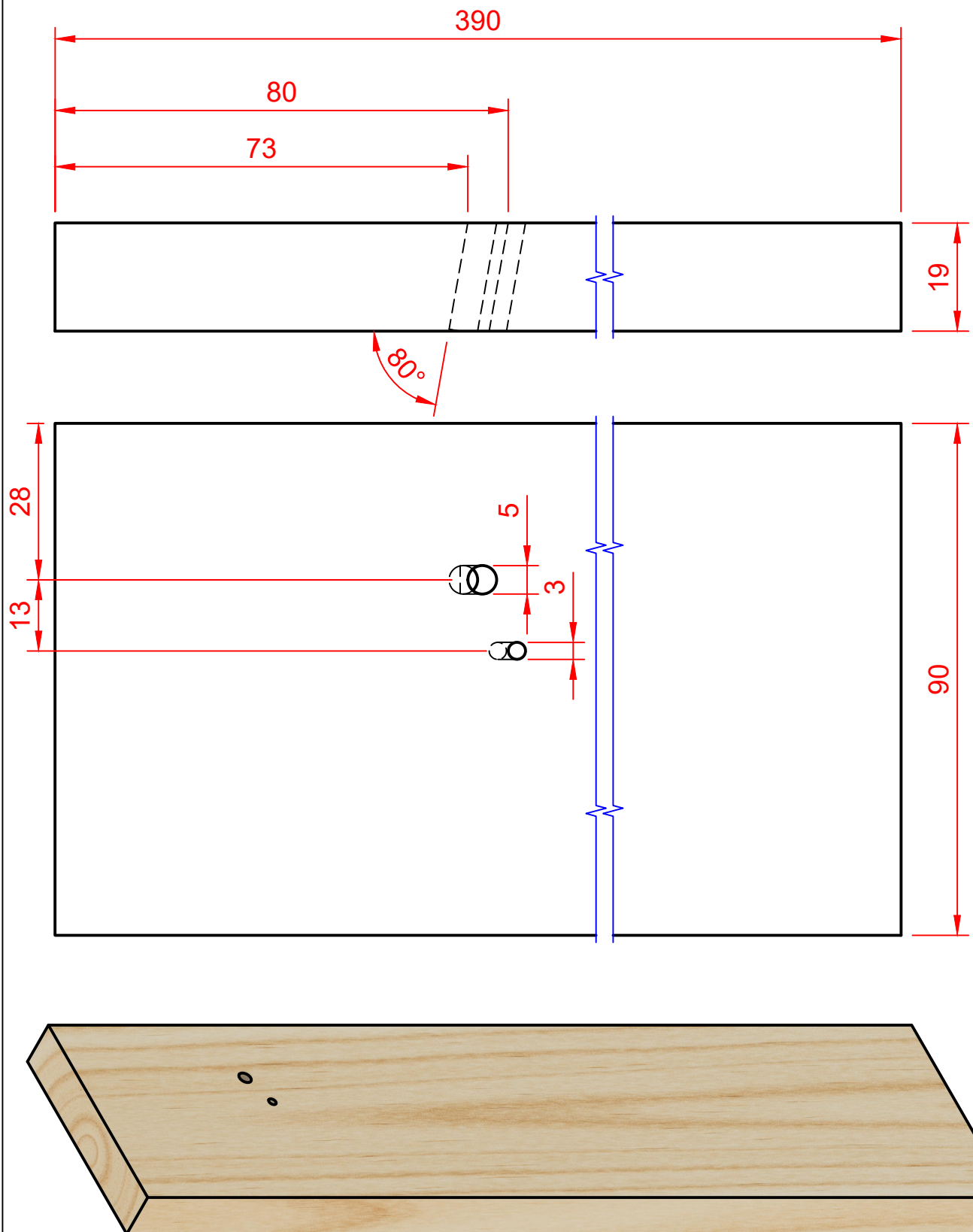
**Enjoy building.**

Dutchy

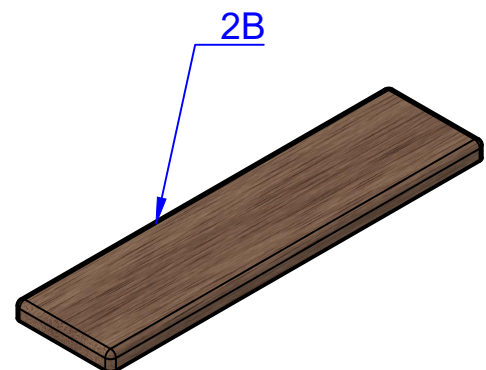
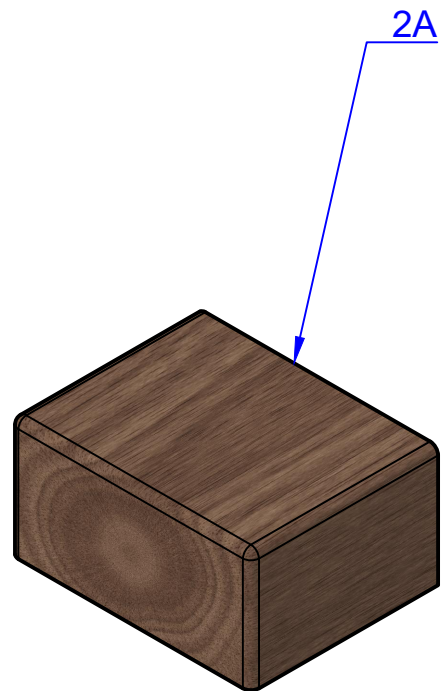
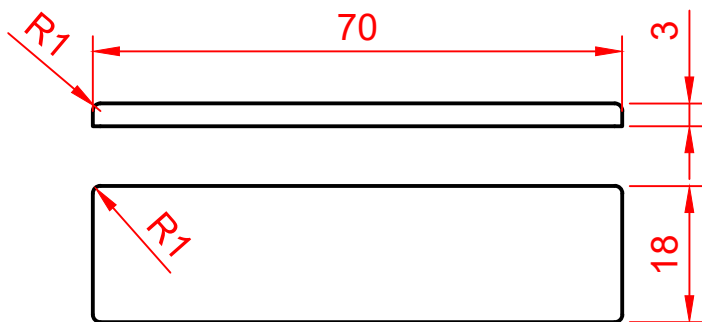
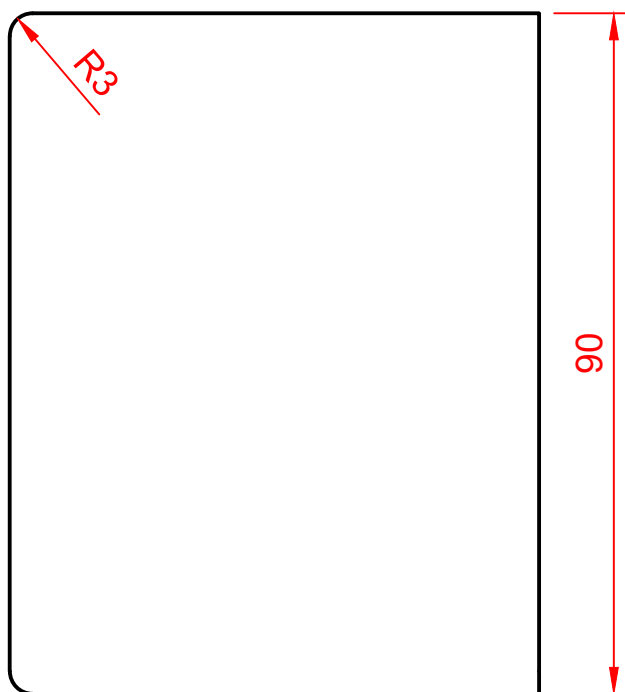
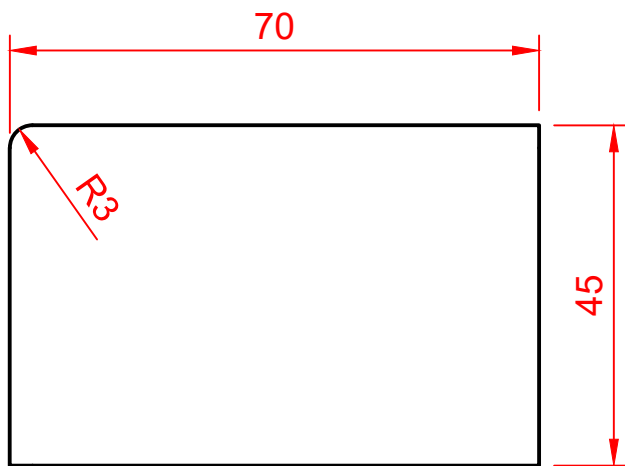
**It is not allowed to omit parts of this document or to make changes, but feel free to share it.**

**Distribution is only allowed as a complete PDF document of 34 pages**

# 01 BOTTOM



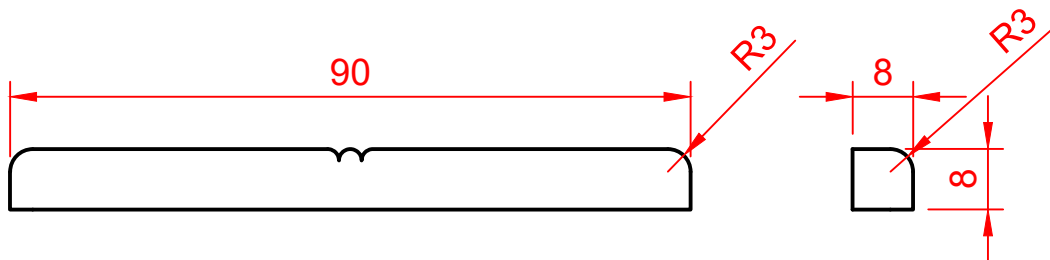
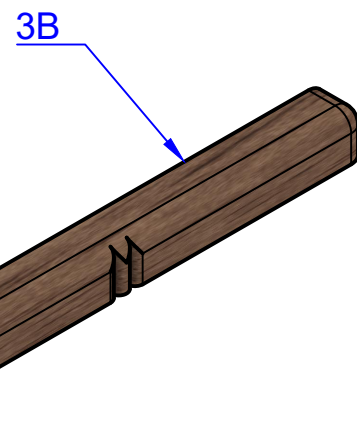
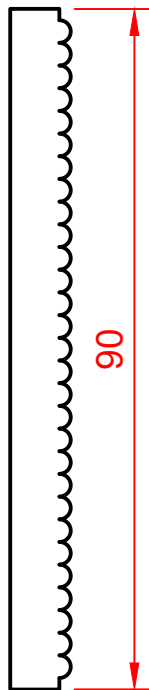
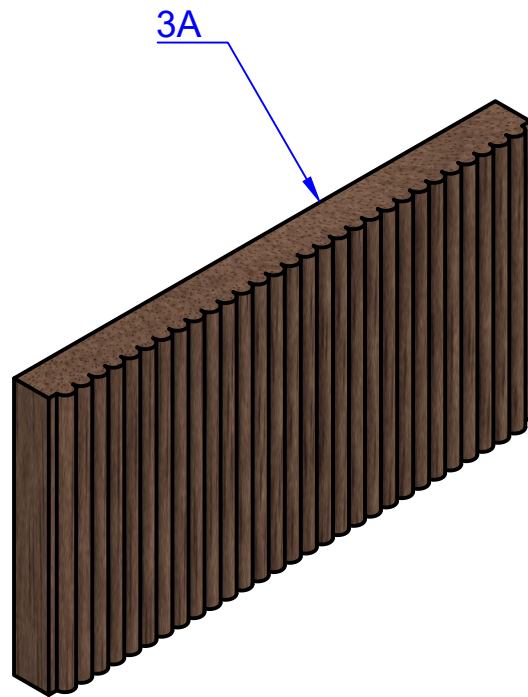
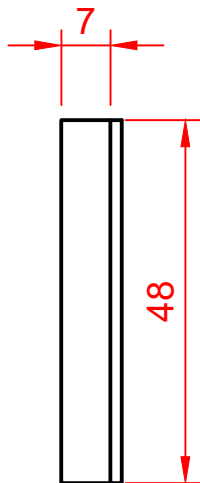
## 02 ENGINE



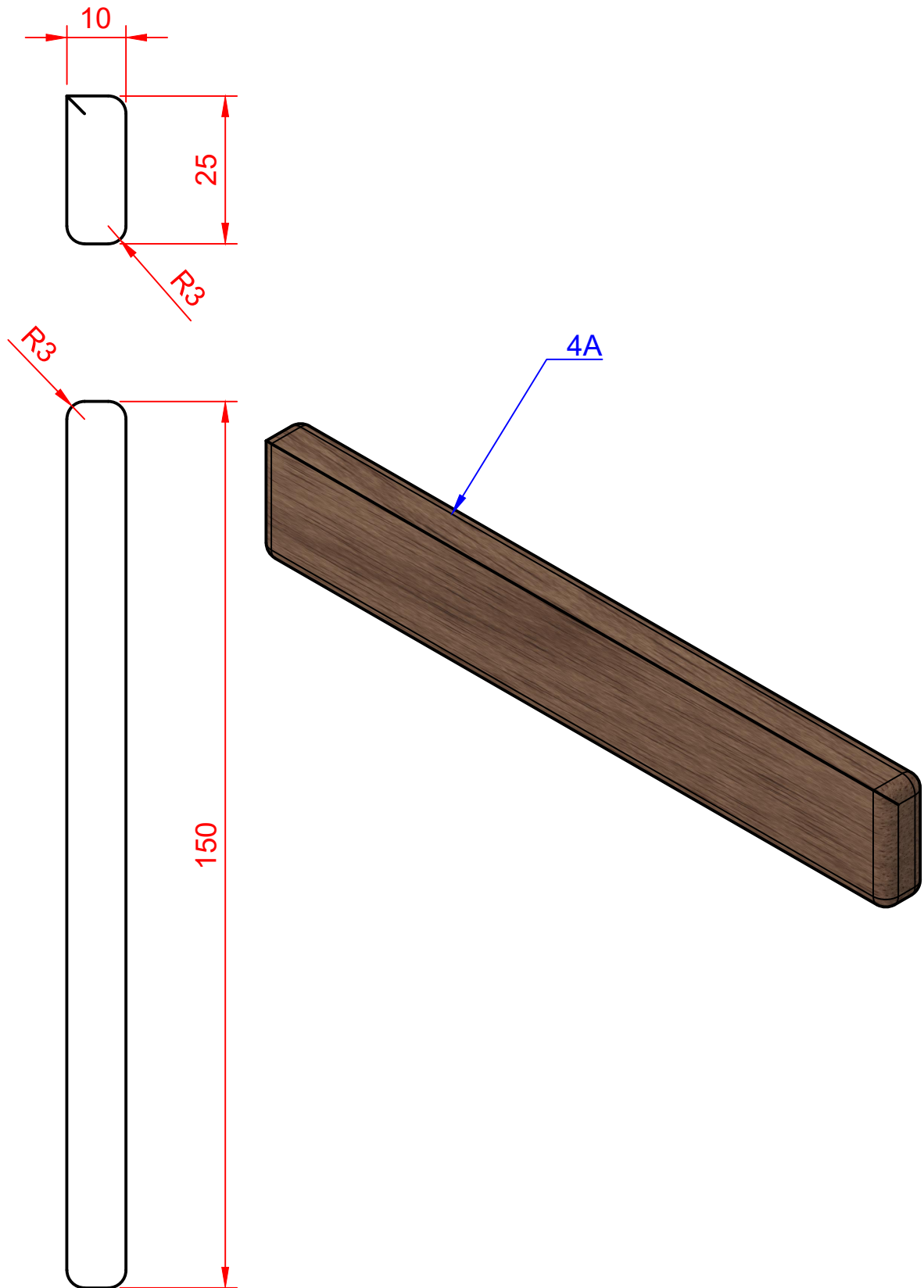


## 03 RADIATOR

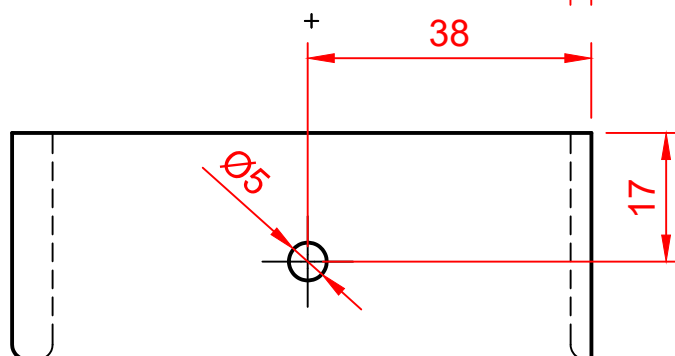
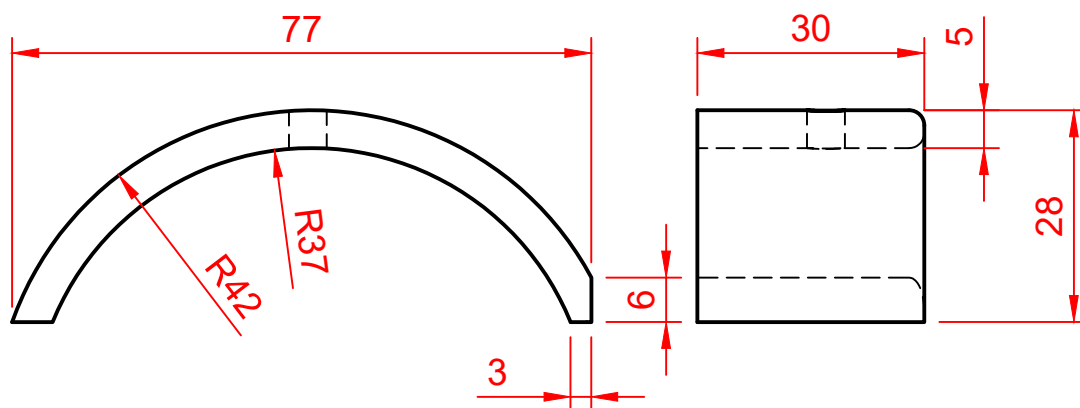
3A Is made out of sliced garden deck wood



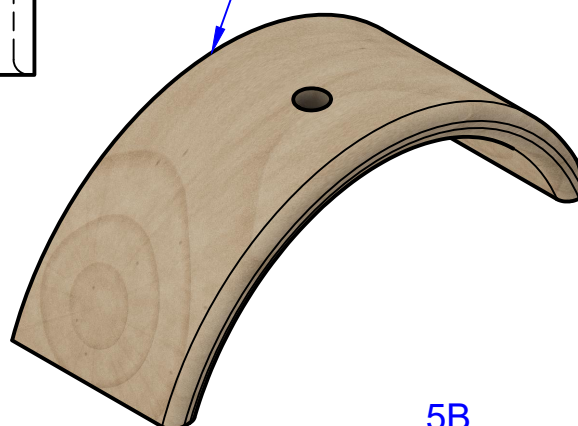
## 04 BUMPER



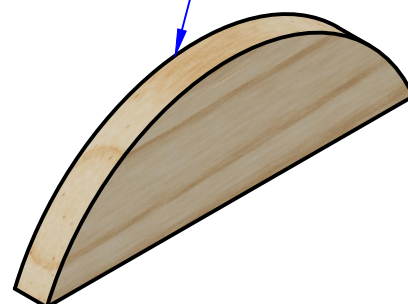
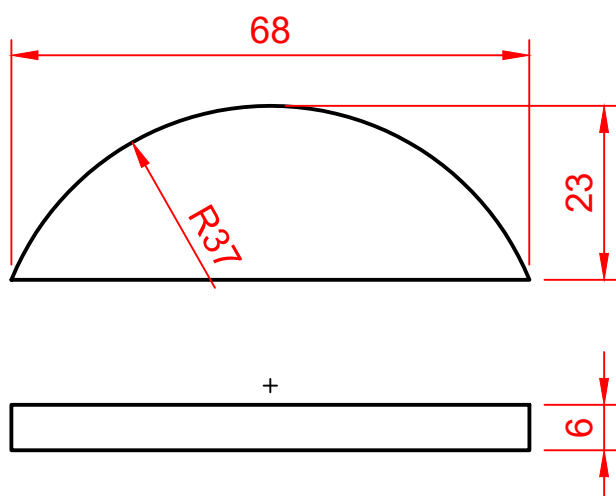
# 05 FENDERS WITH FRONT LIGHTS



5A  
Make 2  
(1Le & 1Ri)

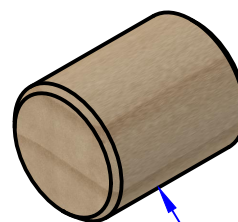
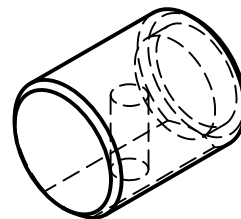
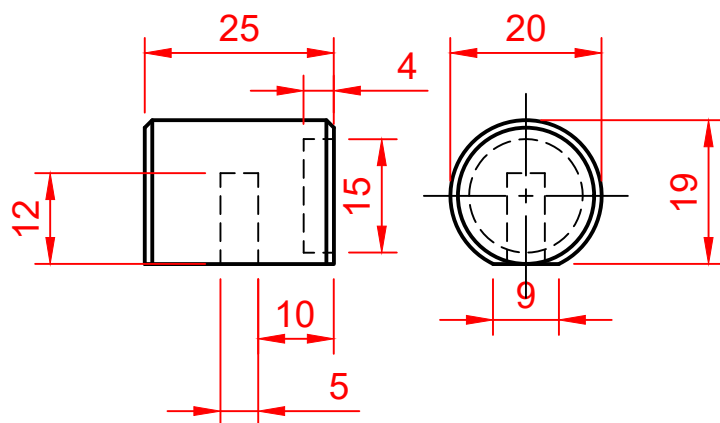


5B  
Make 2

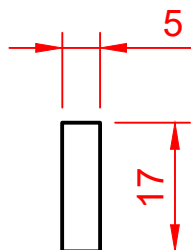




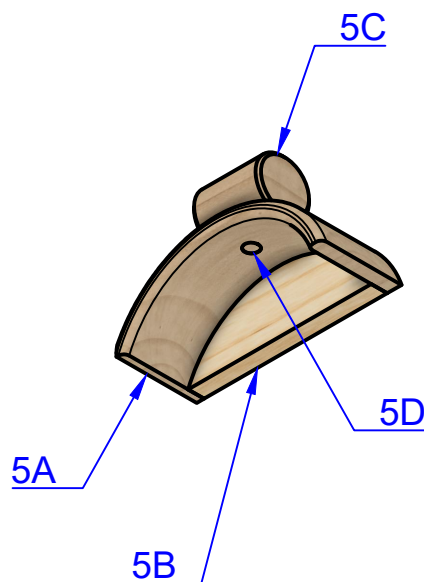
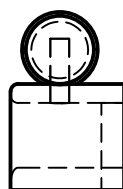
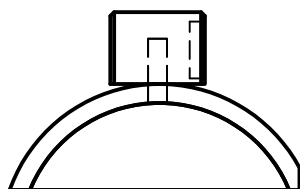
# 05 FENDERS WITH FRONT LIGHTS



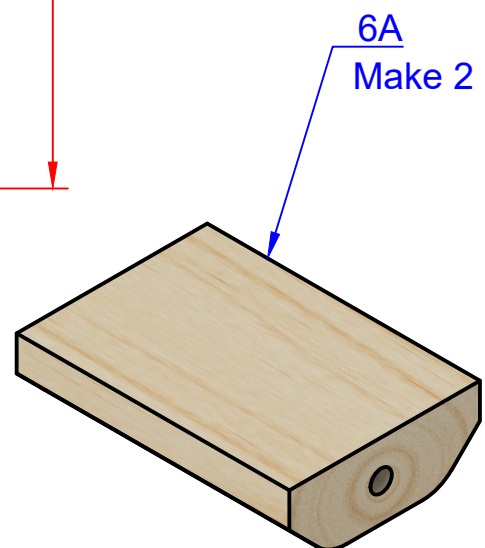
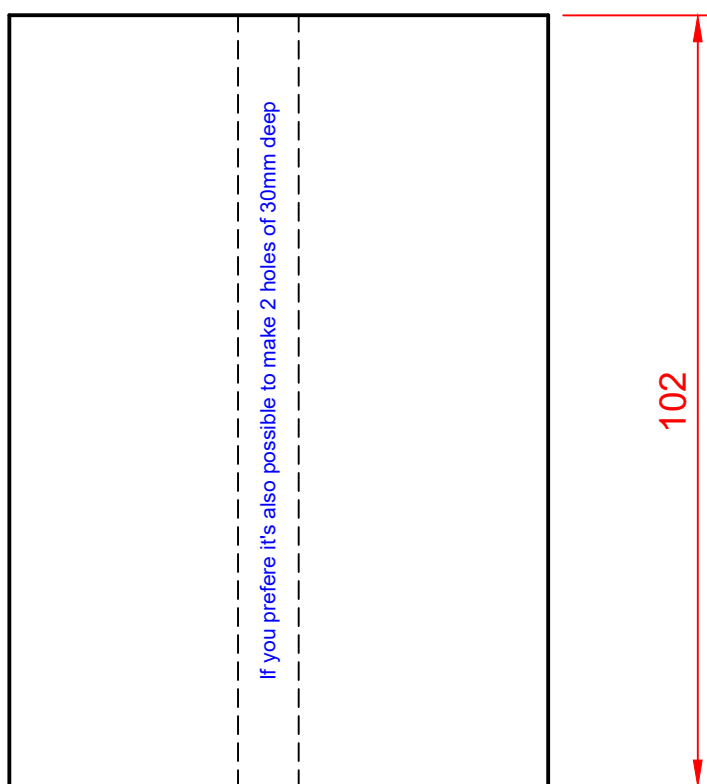
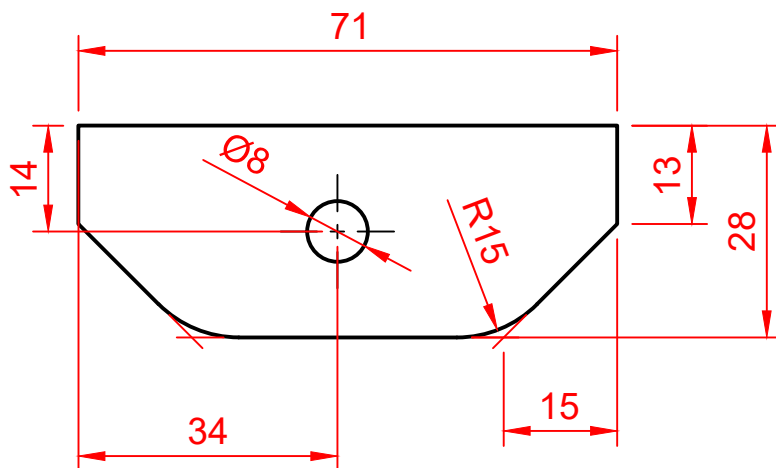
5C  
Make 2



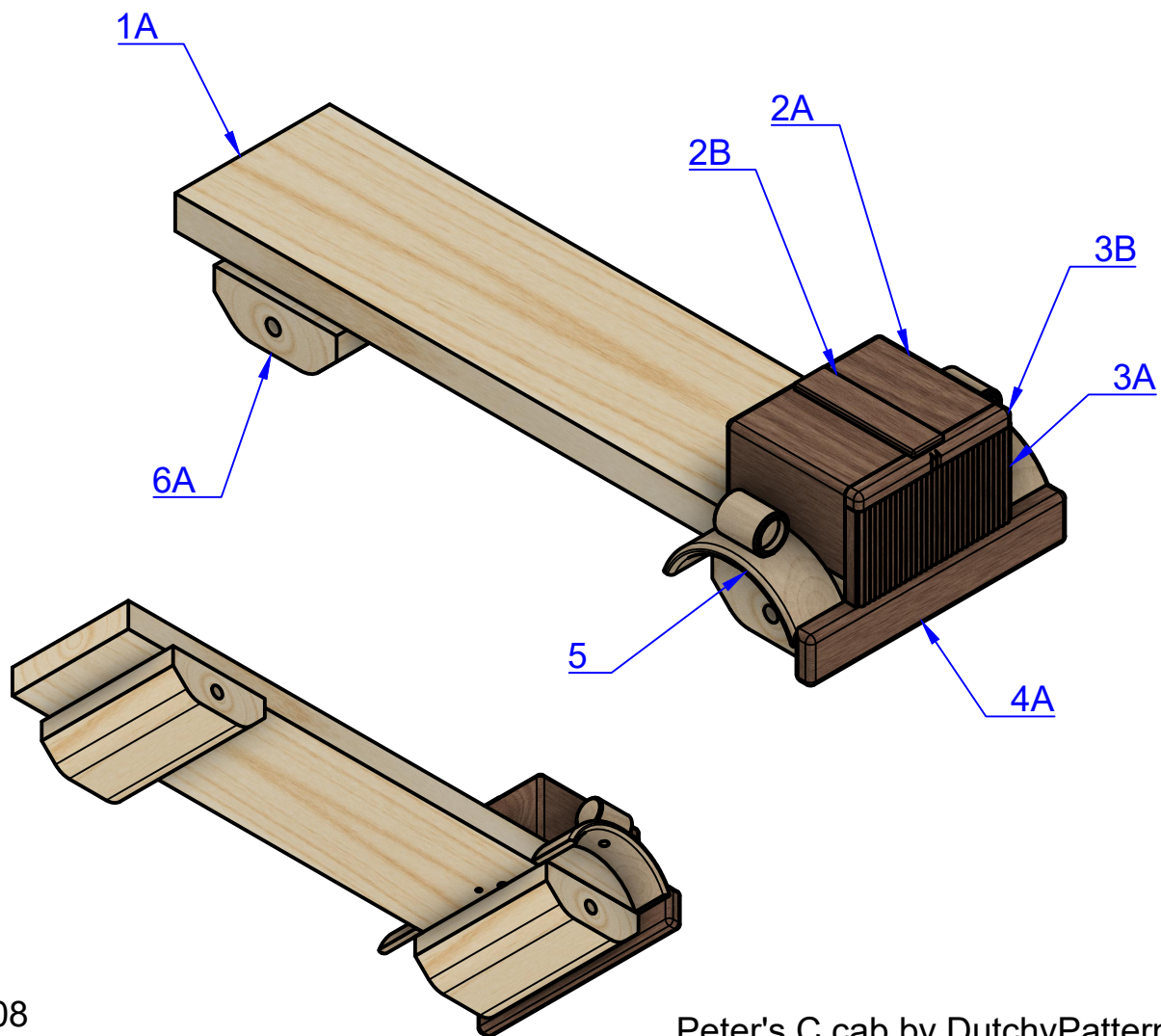
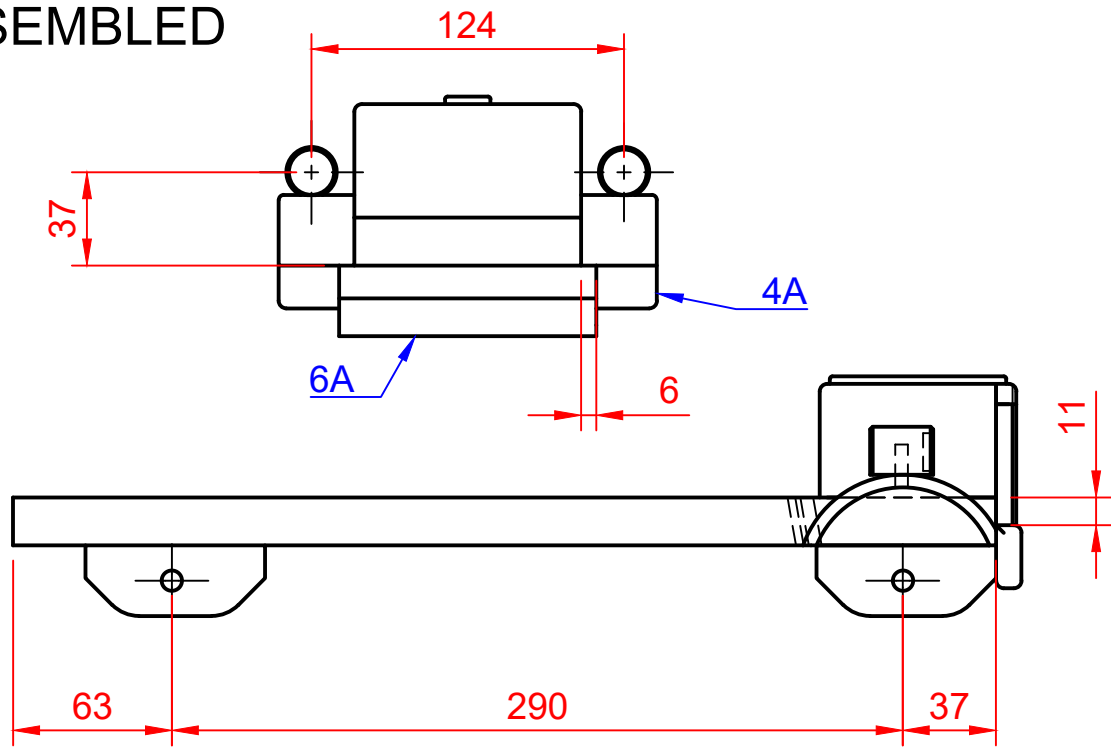
5D  
You need 2



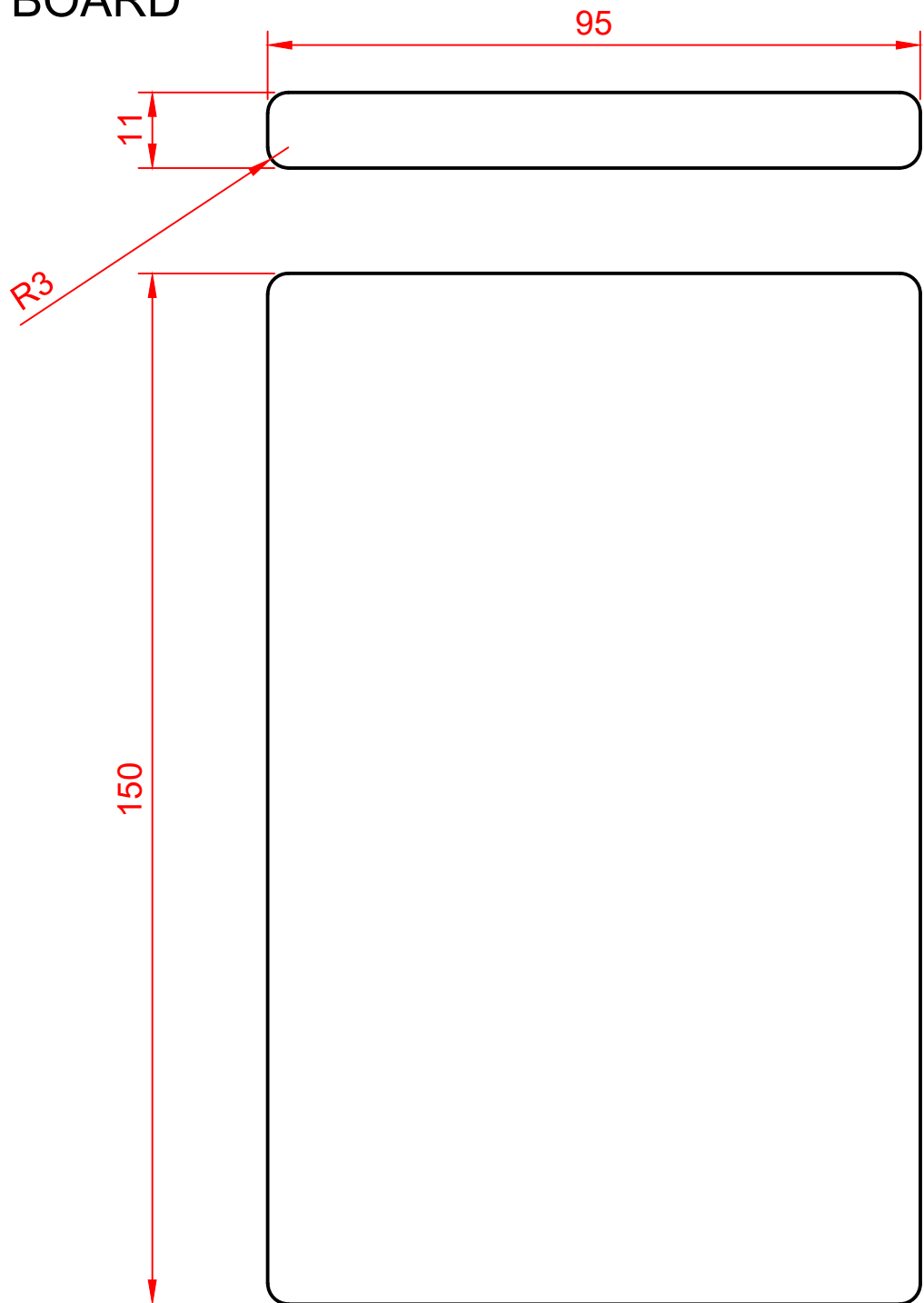
## 06 AXLES



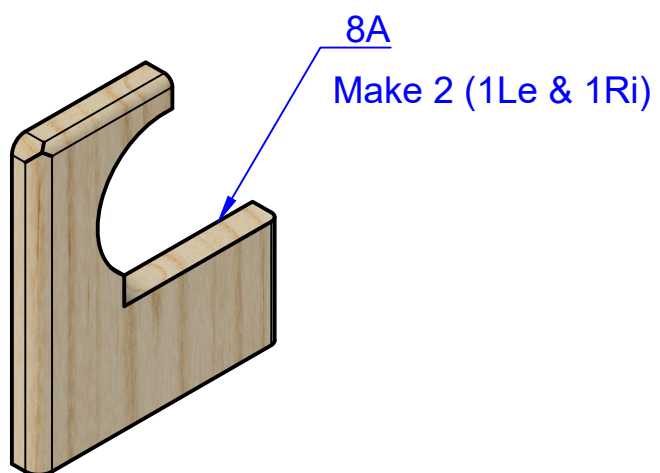
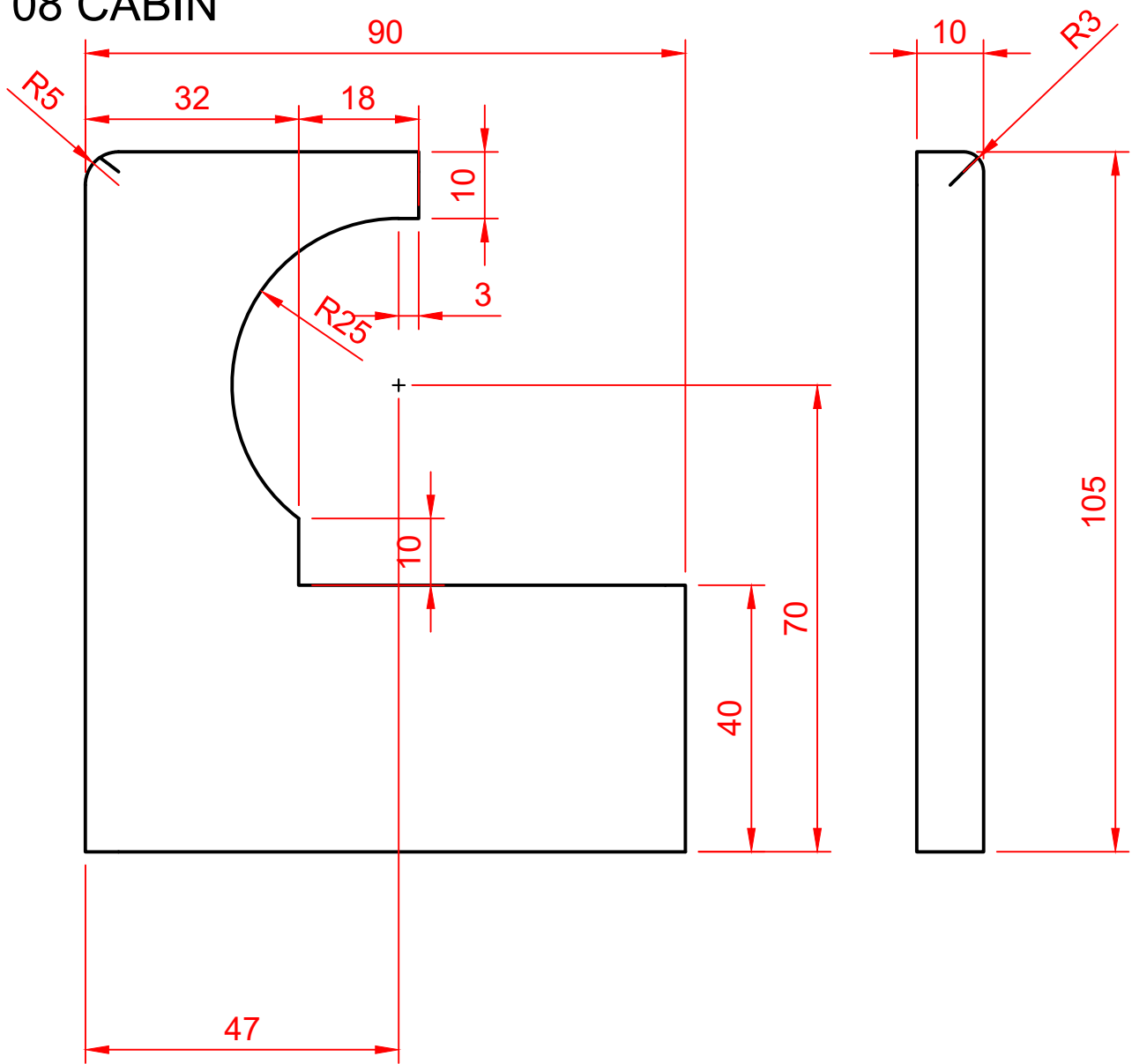
# ASSEMBLED



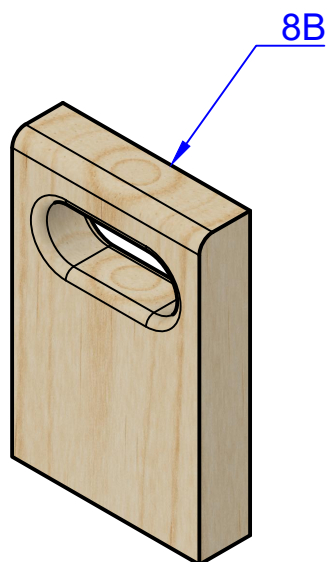
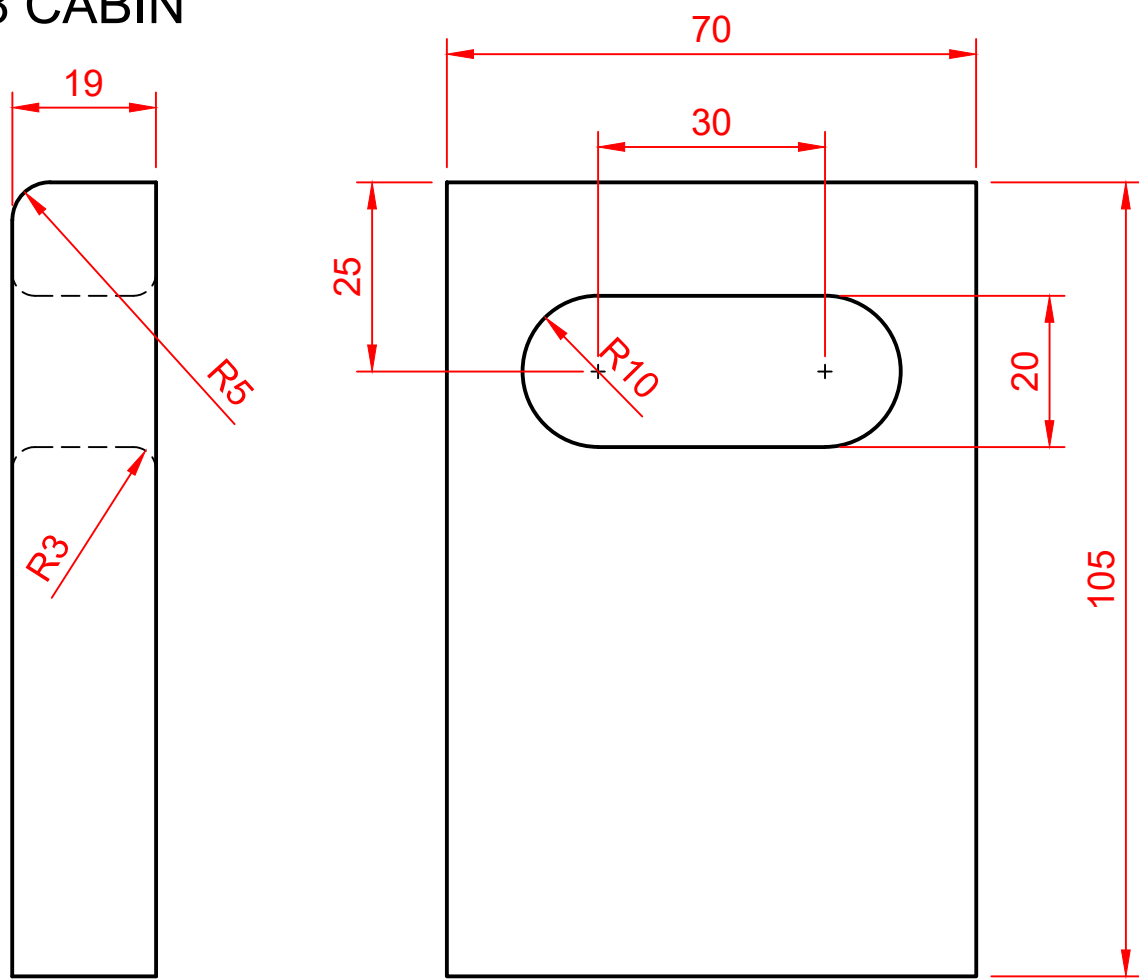
## 07 FOOTBOARD



# 08 CABIN

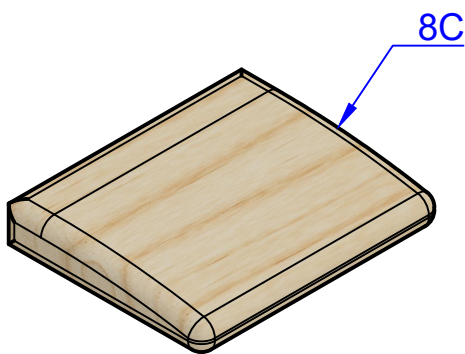
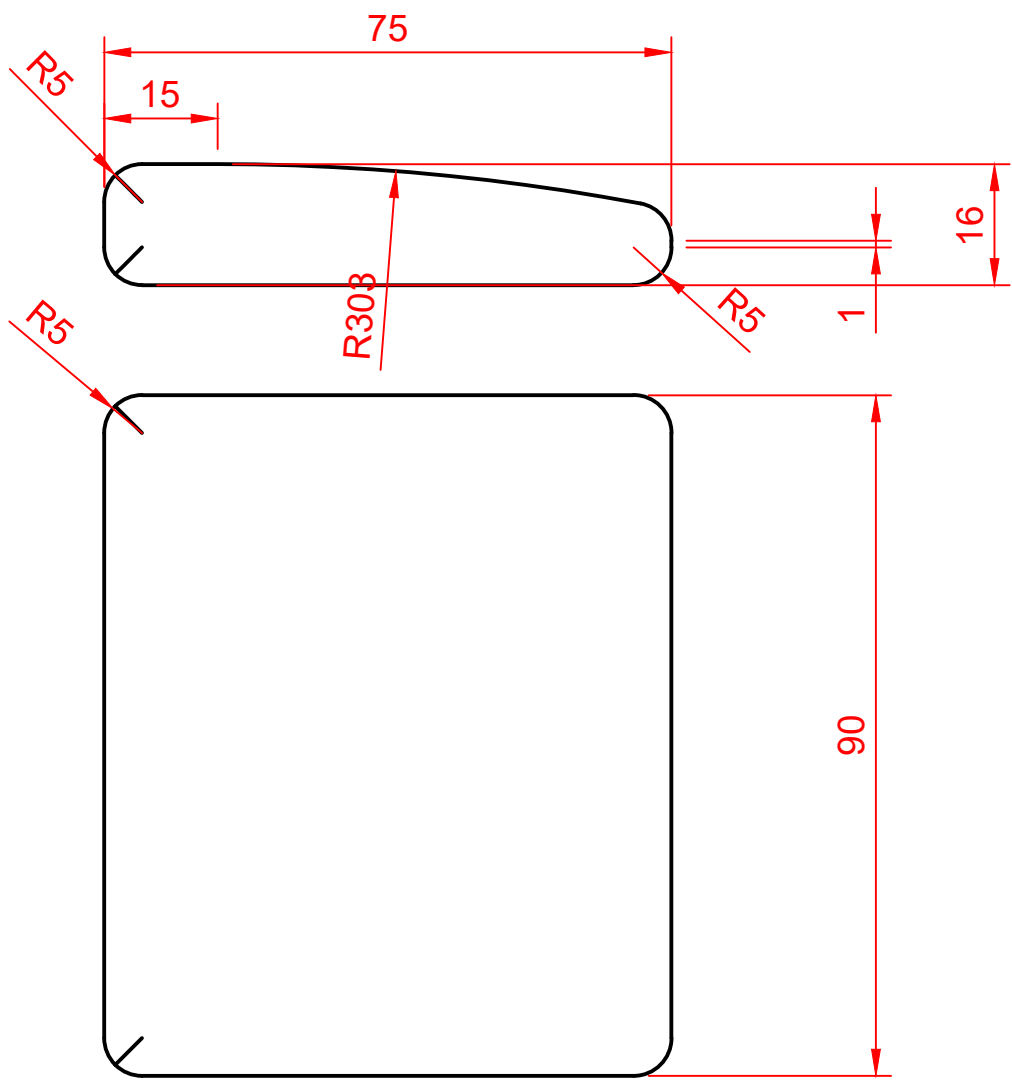


## 08 CABIN

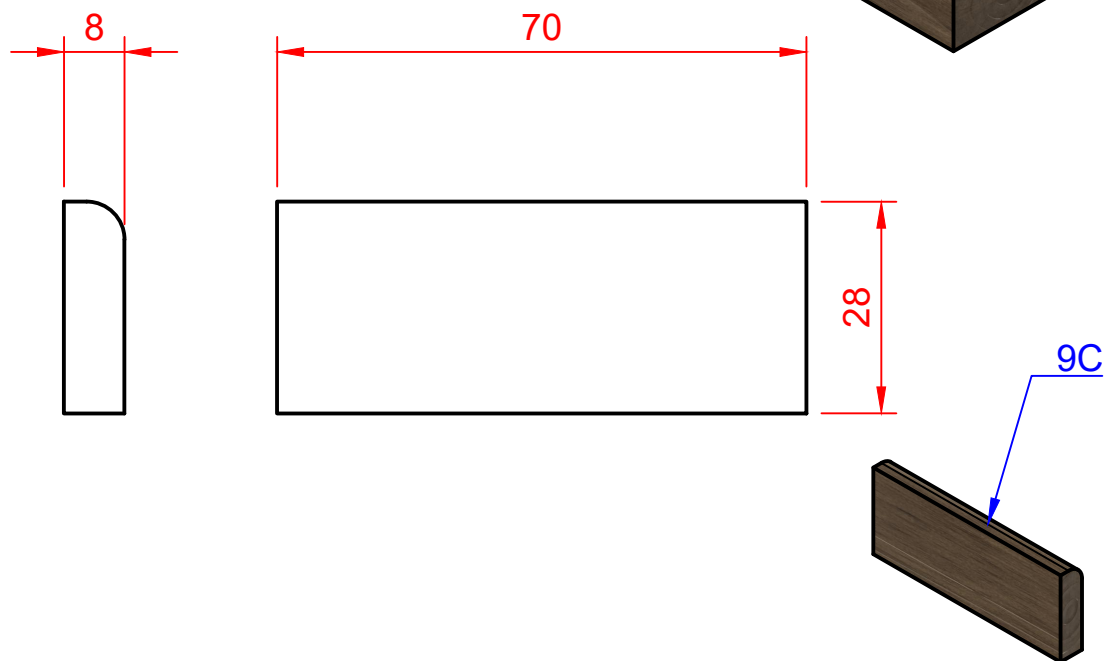
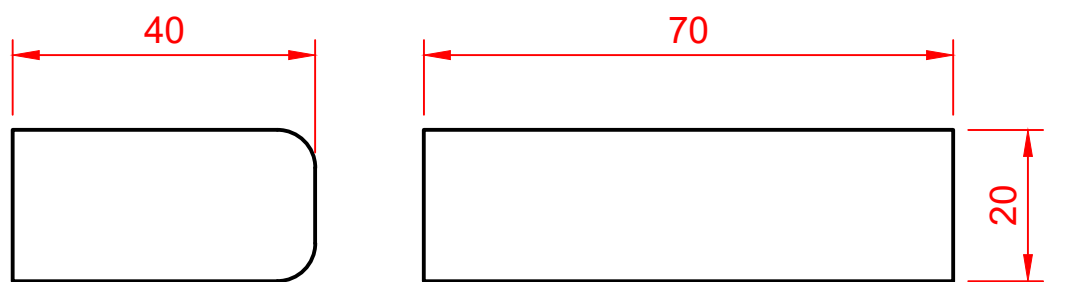
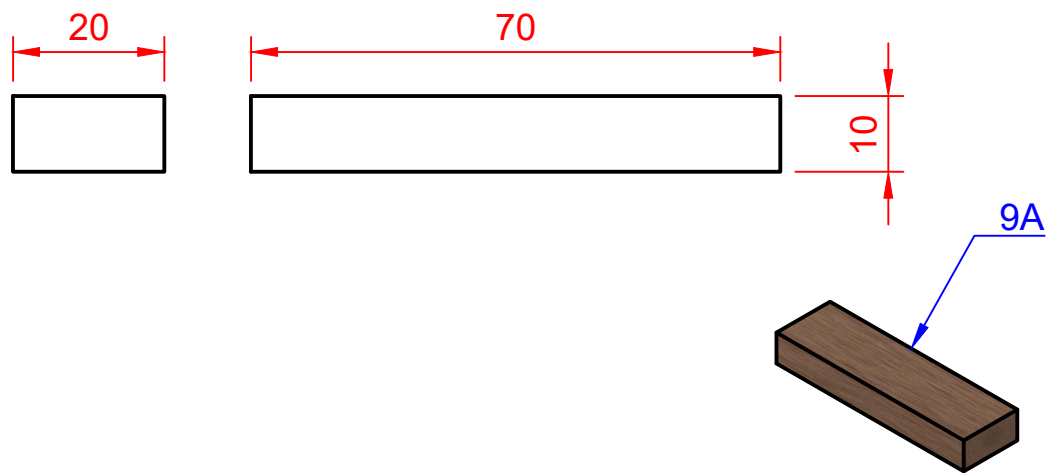




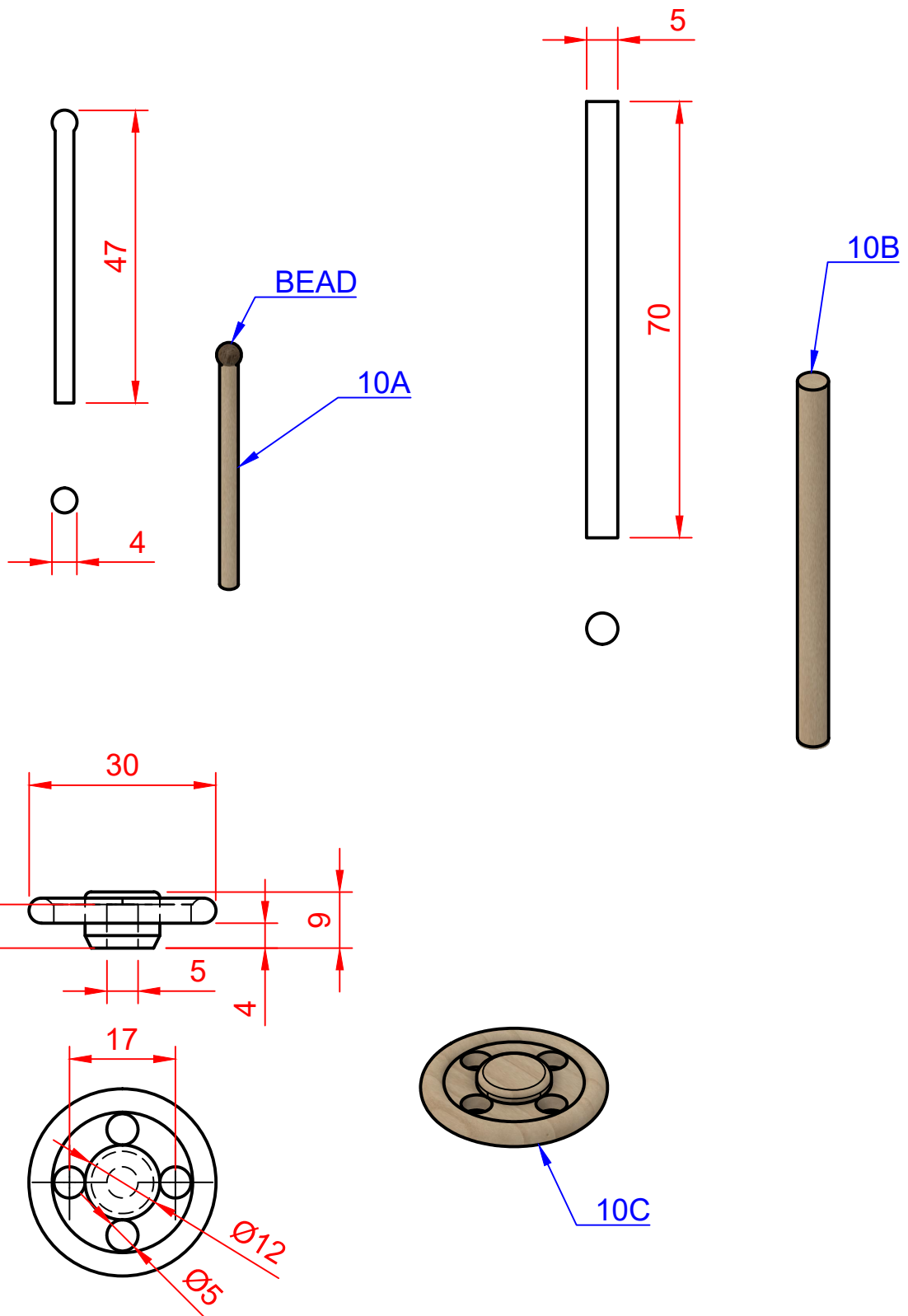
08 CABIN



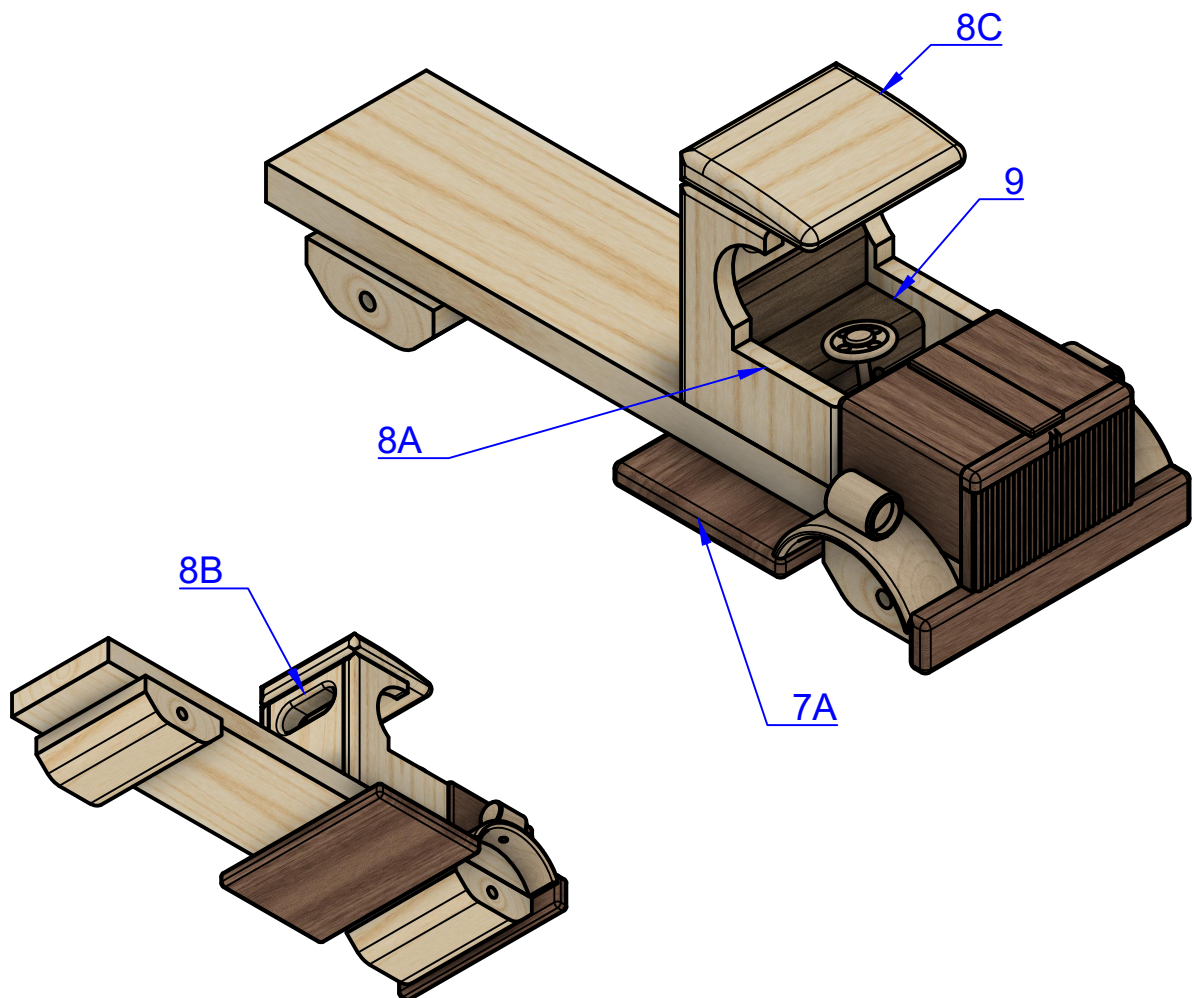
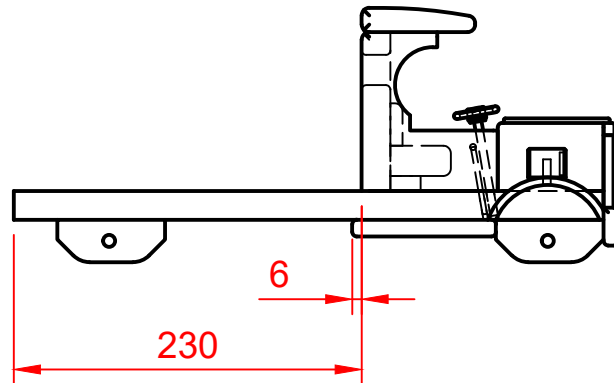
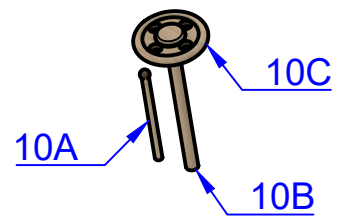
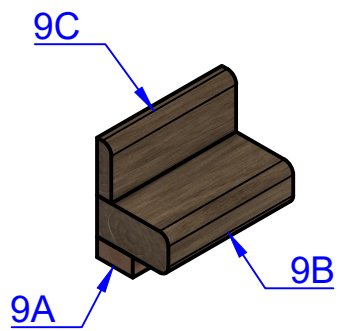
## 09 SEAT



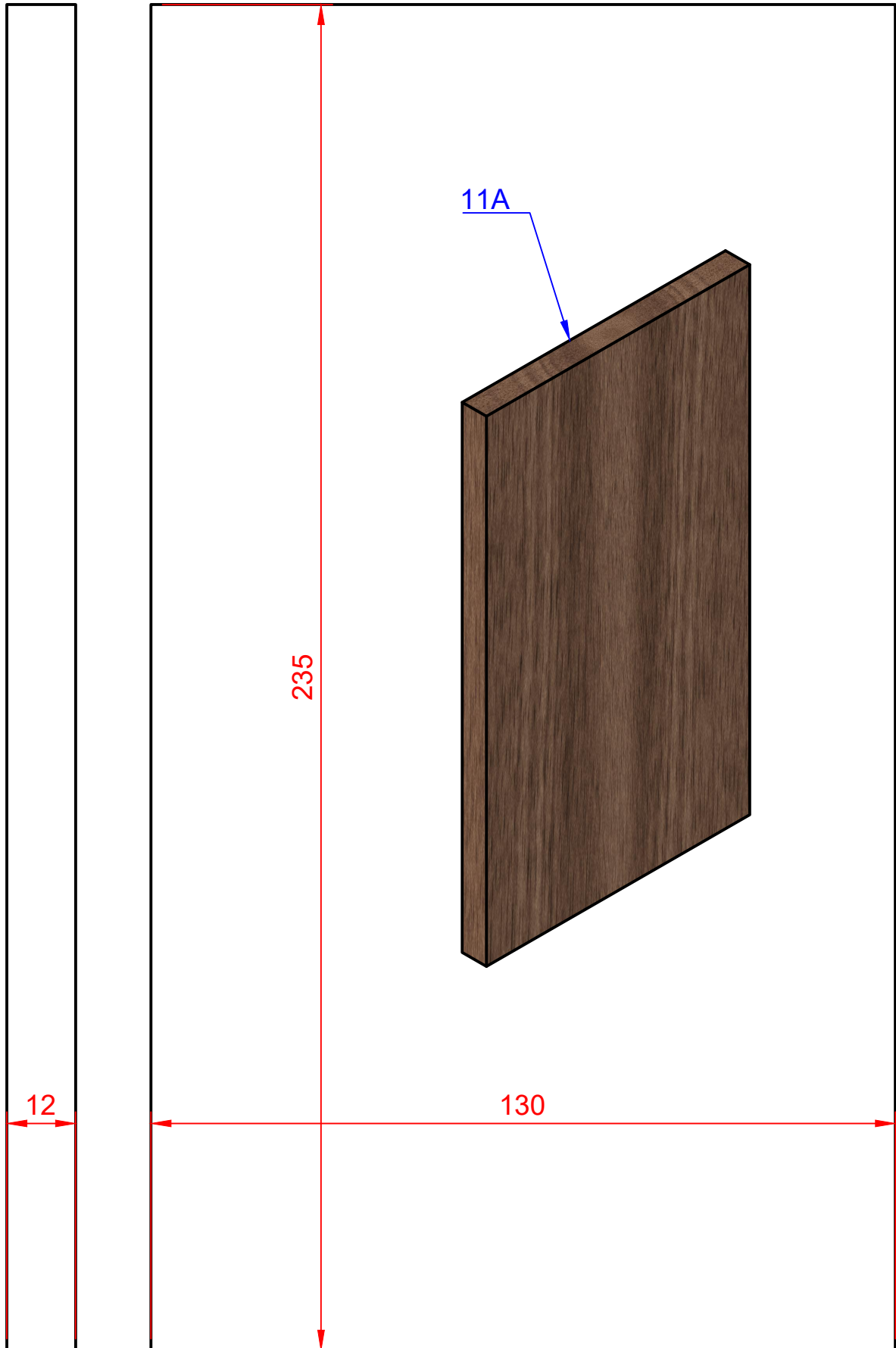
# 10 STEERING WHEEL AND GEER LEVER



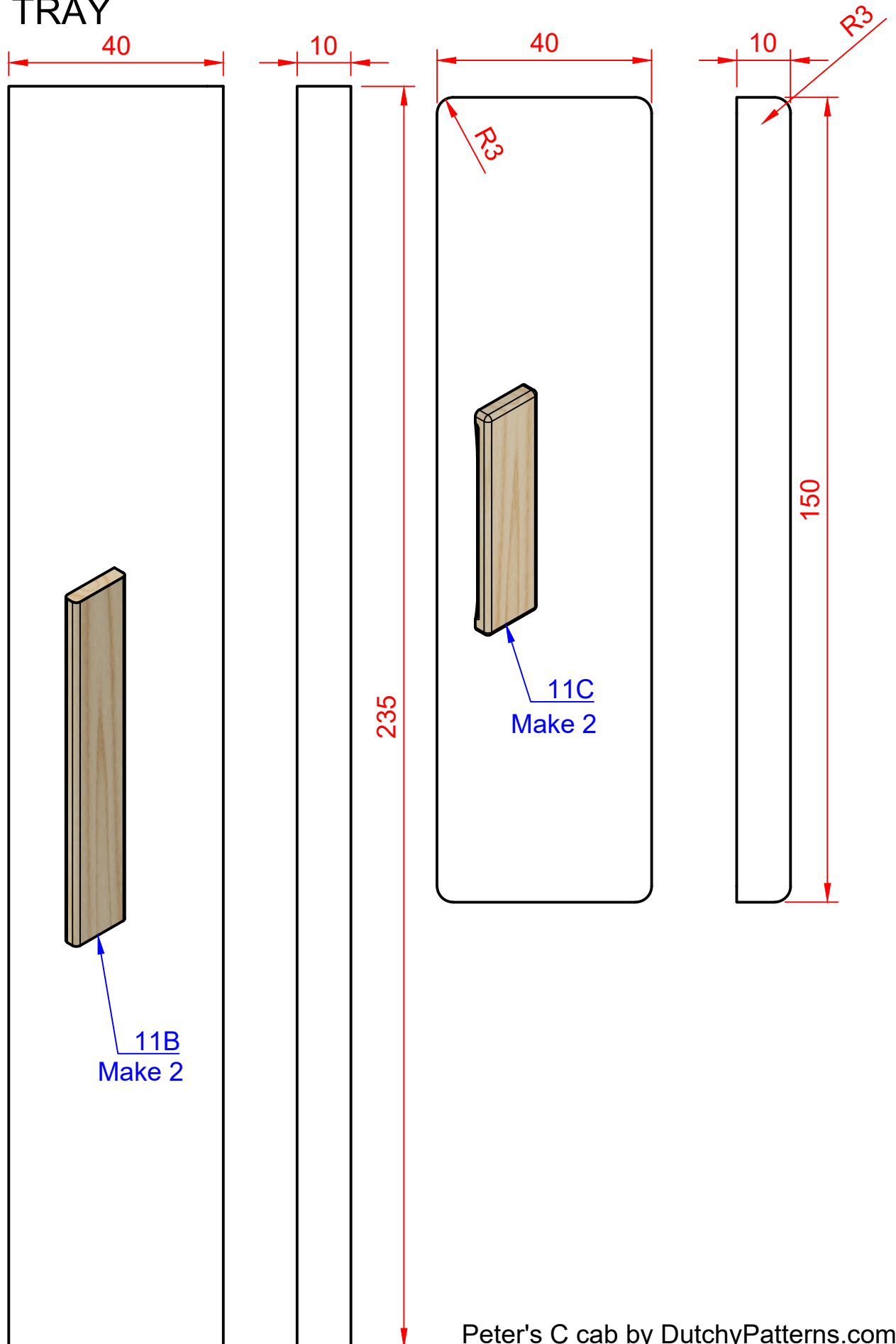
# ASSEMBLED



# 11 TRAY

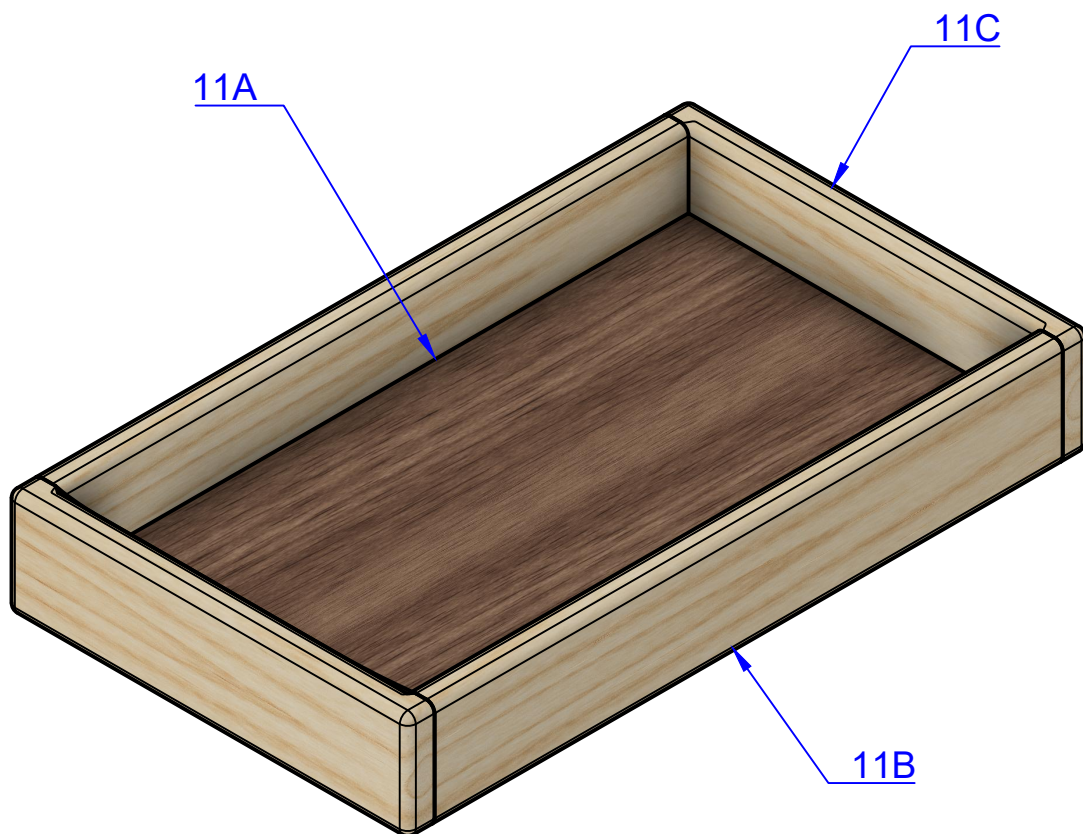
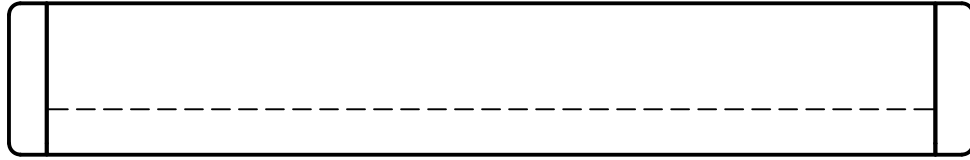


# 11 TRAY



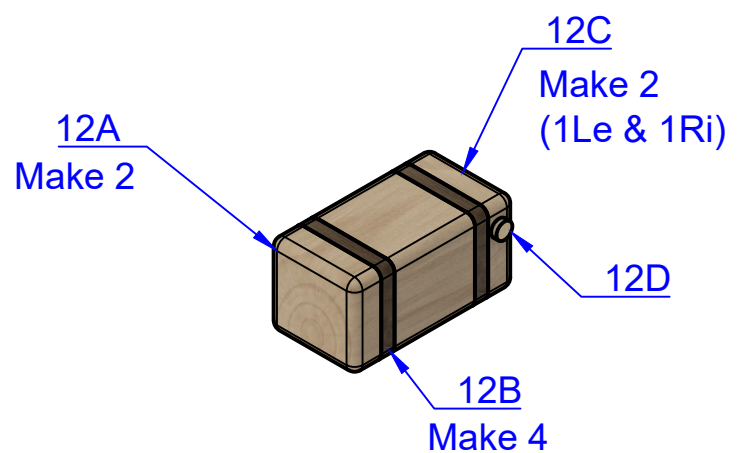
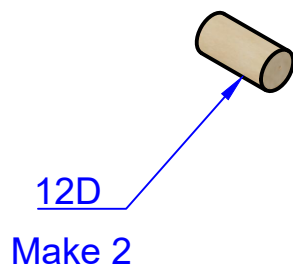
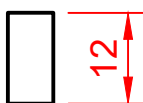
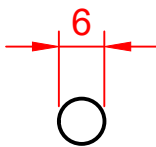
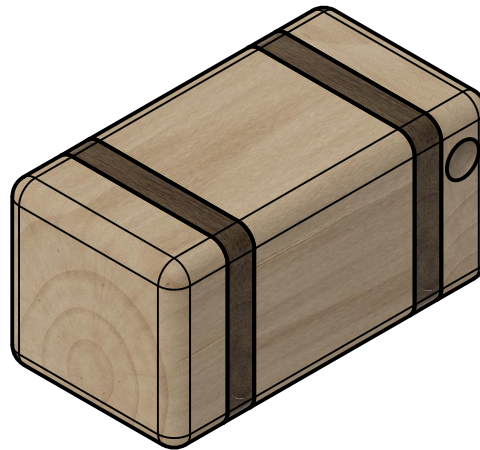
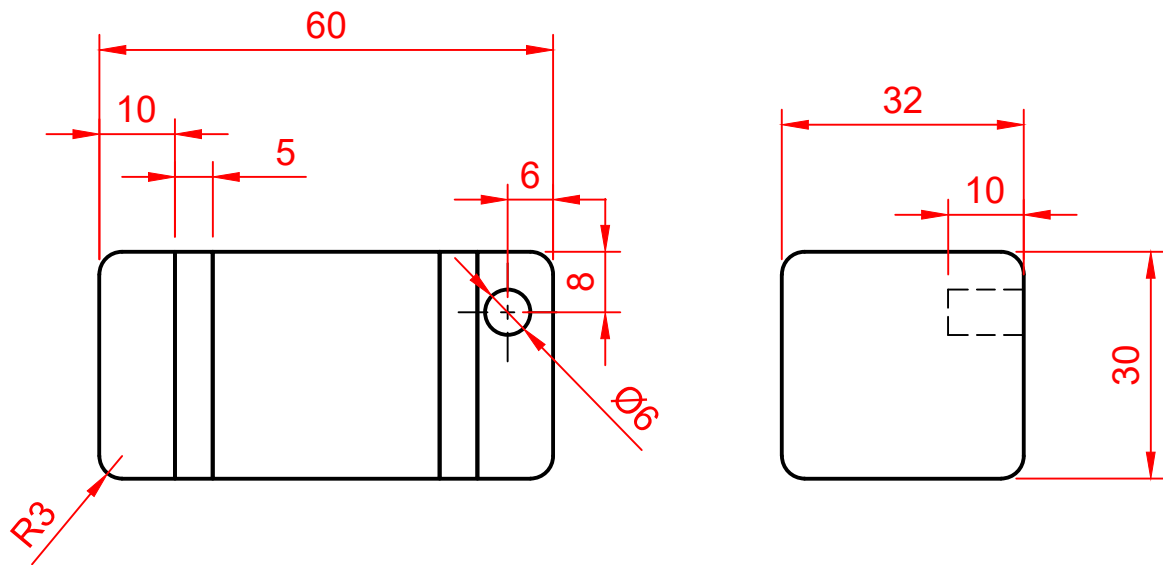


# ASSEMBLED

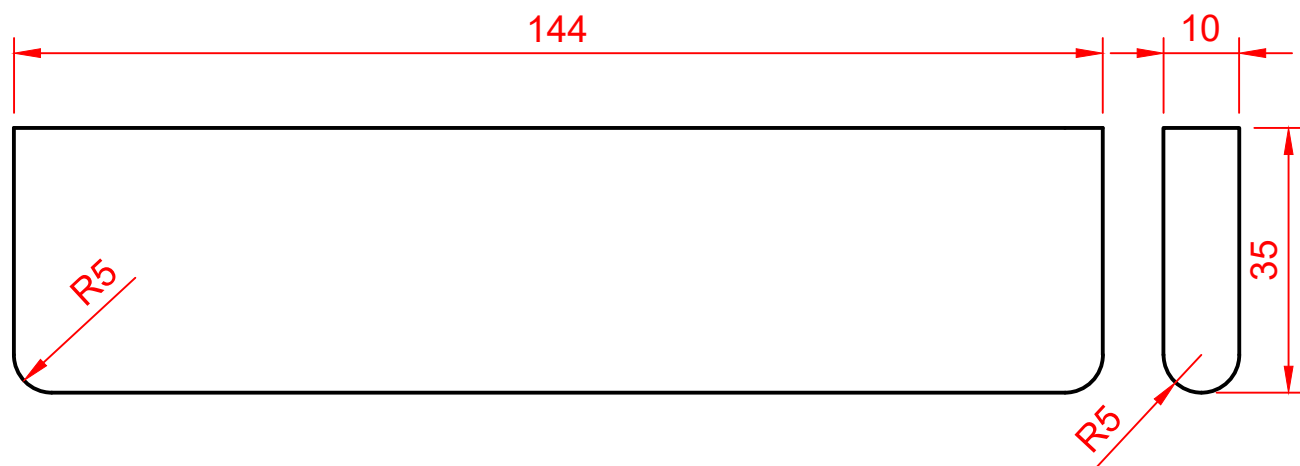


# 12 FUELTANK

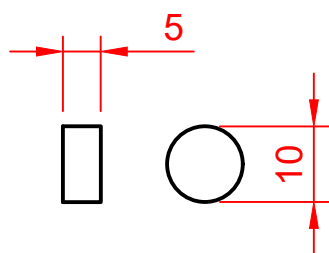
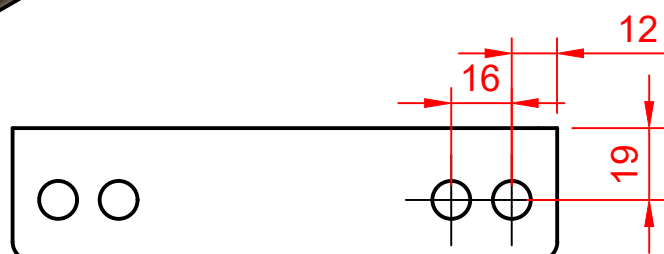
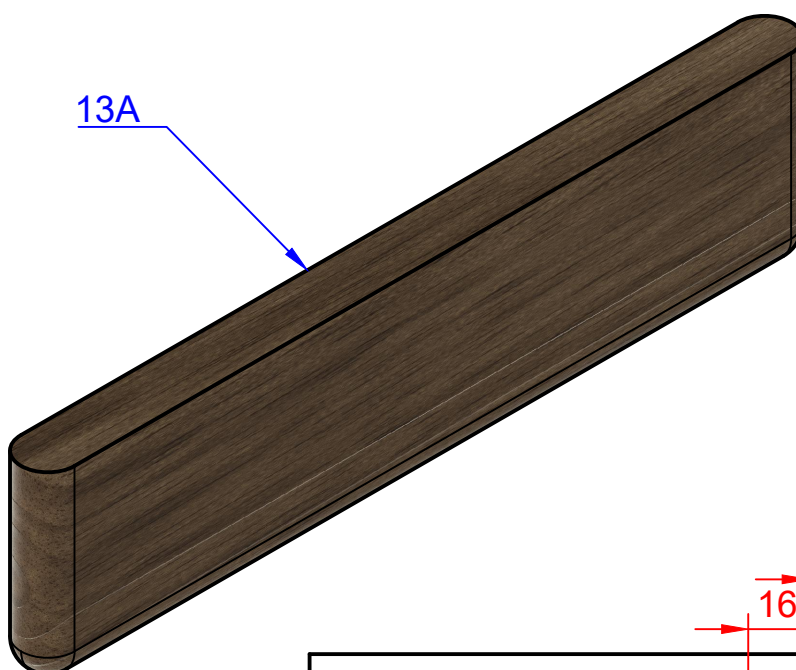
Make 2  
(1Le & 1Ri)



# 13 REAR FENDER



13A

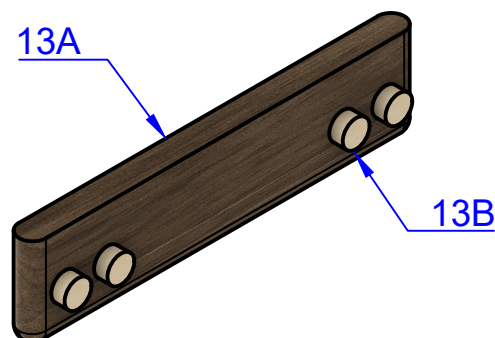


13B

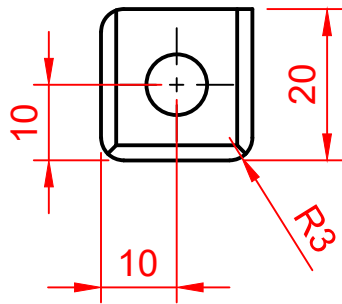
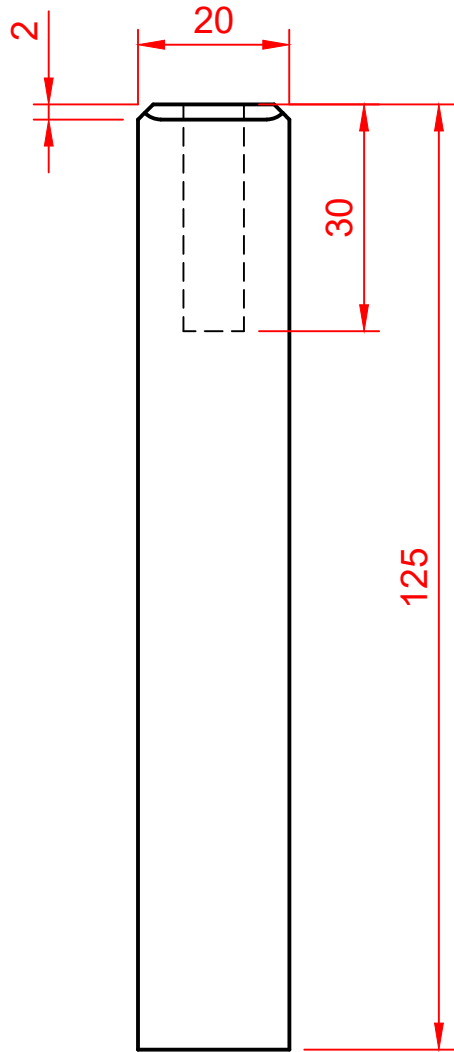
Make 4



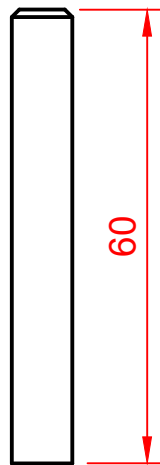
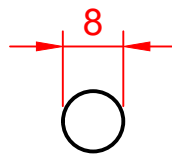
13A



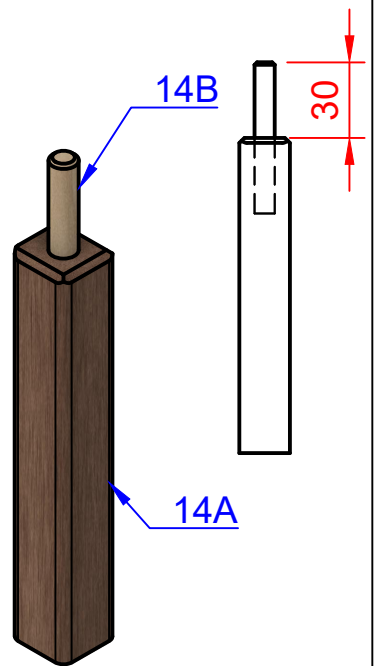
# 14 EXHAUST



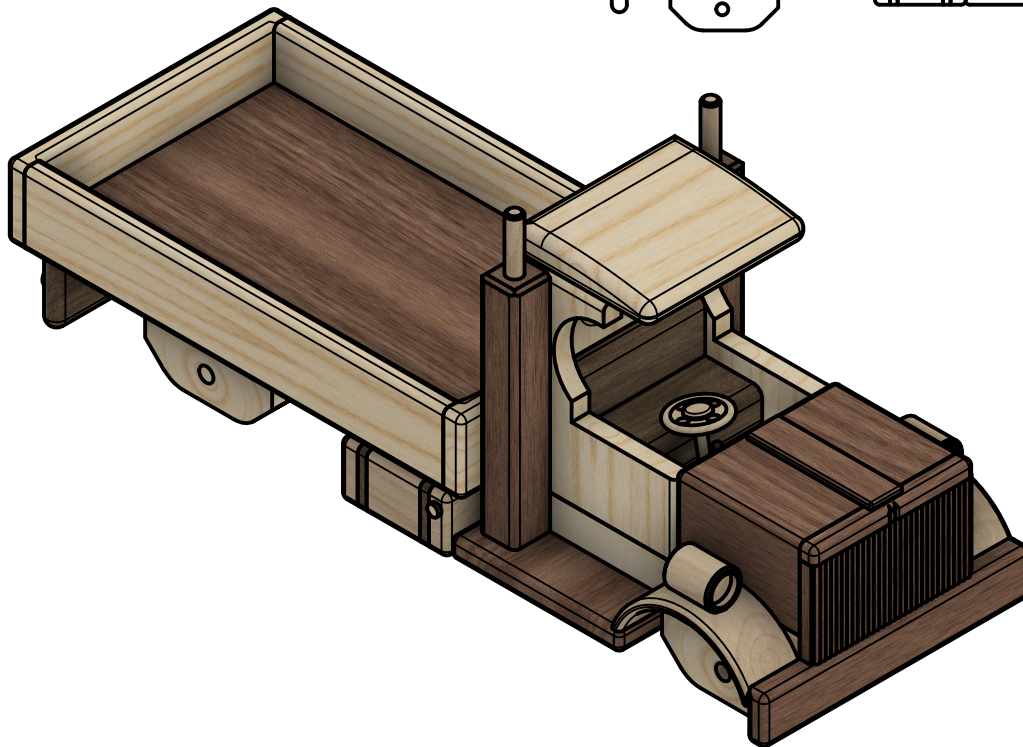
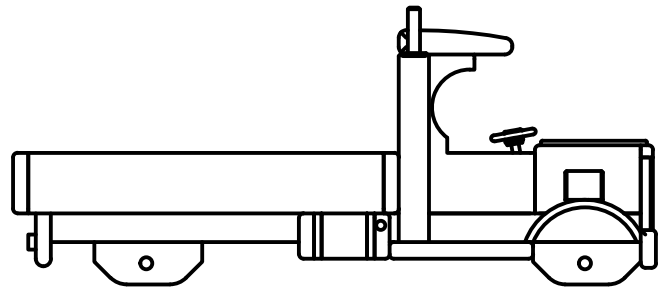
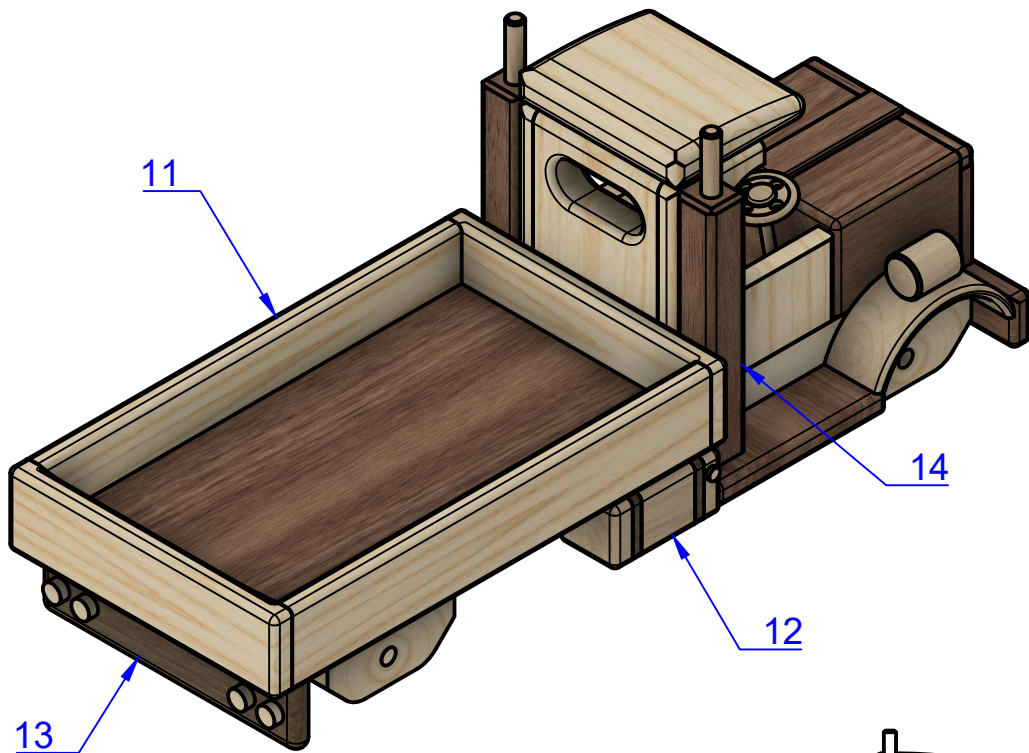
14A  
Make 2  
(1Le & 1Ri)



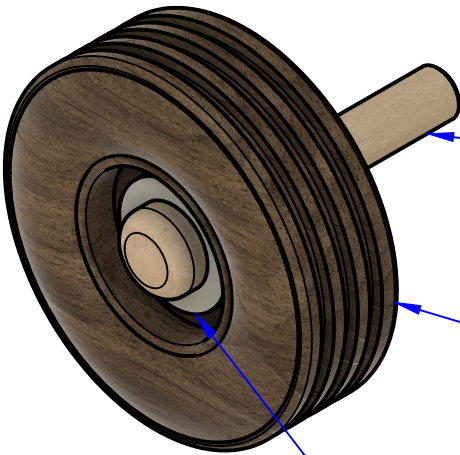
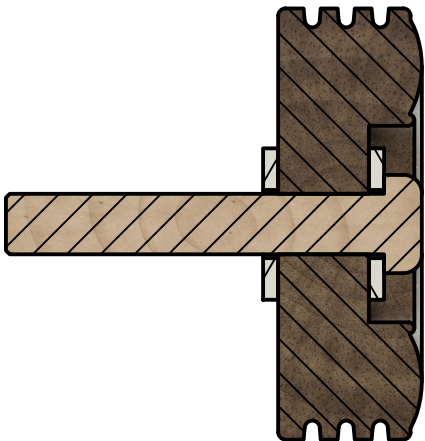
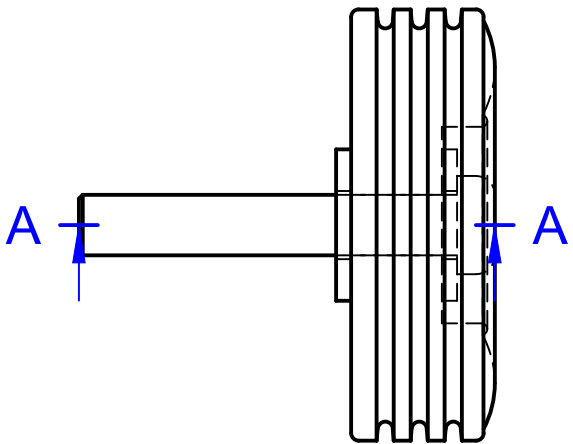
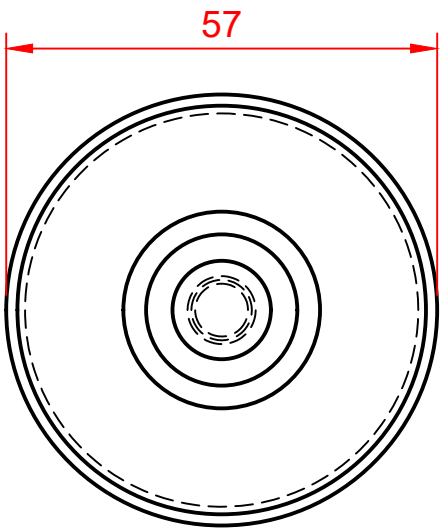
14B  
Make 2



# ASSEMBLED



# 15 WHEELS AND AXLES



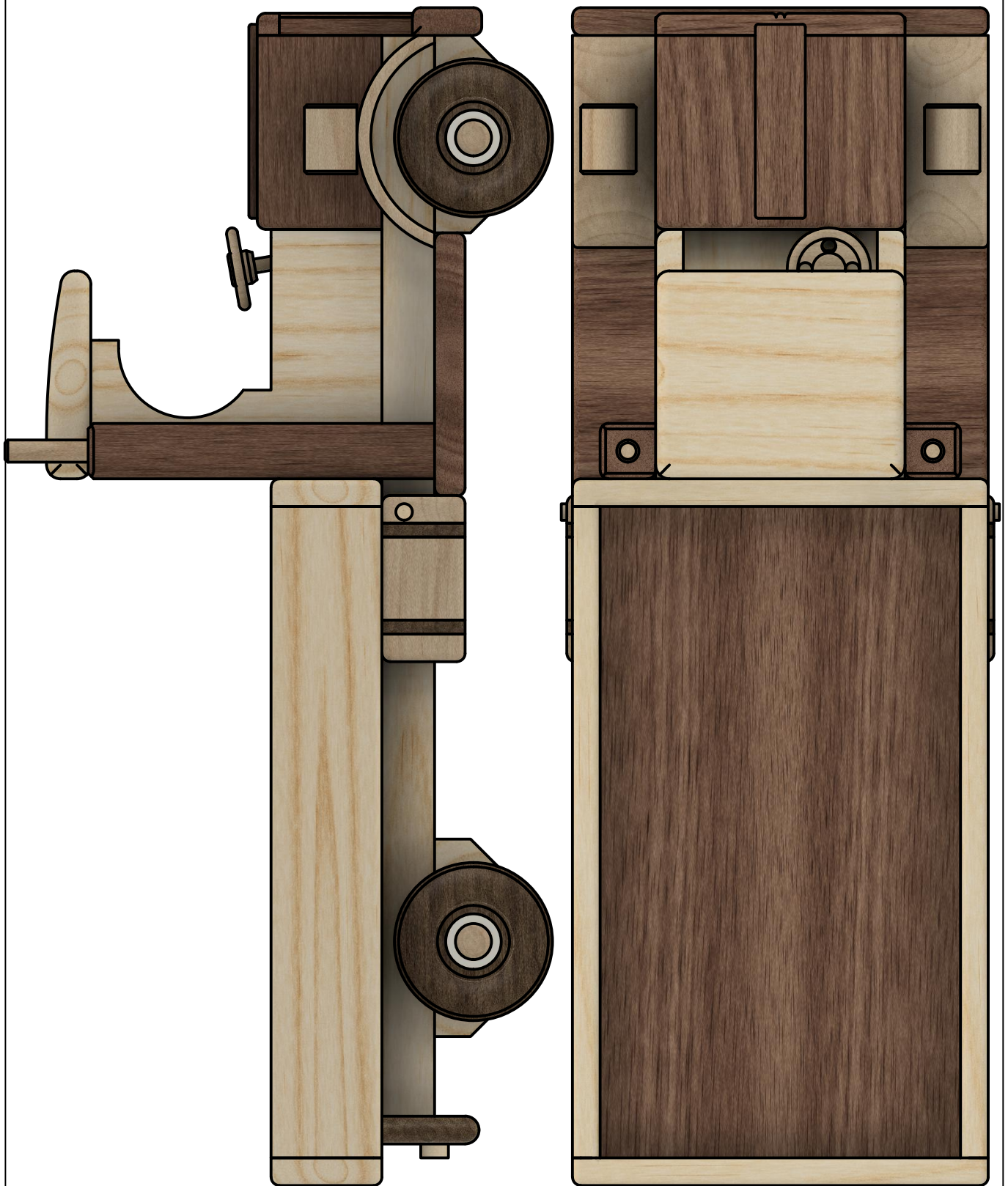
AXLE PIN D8  
You need 4

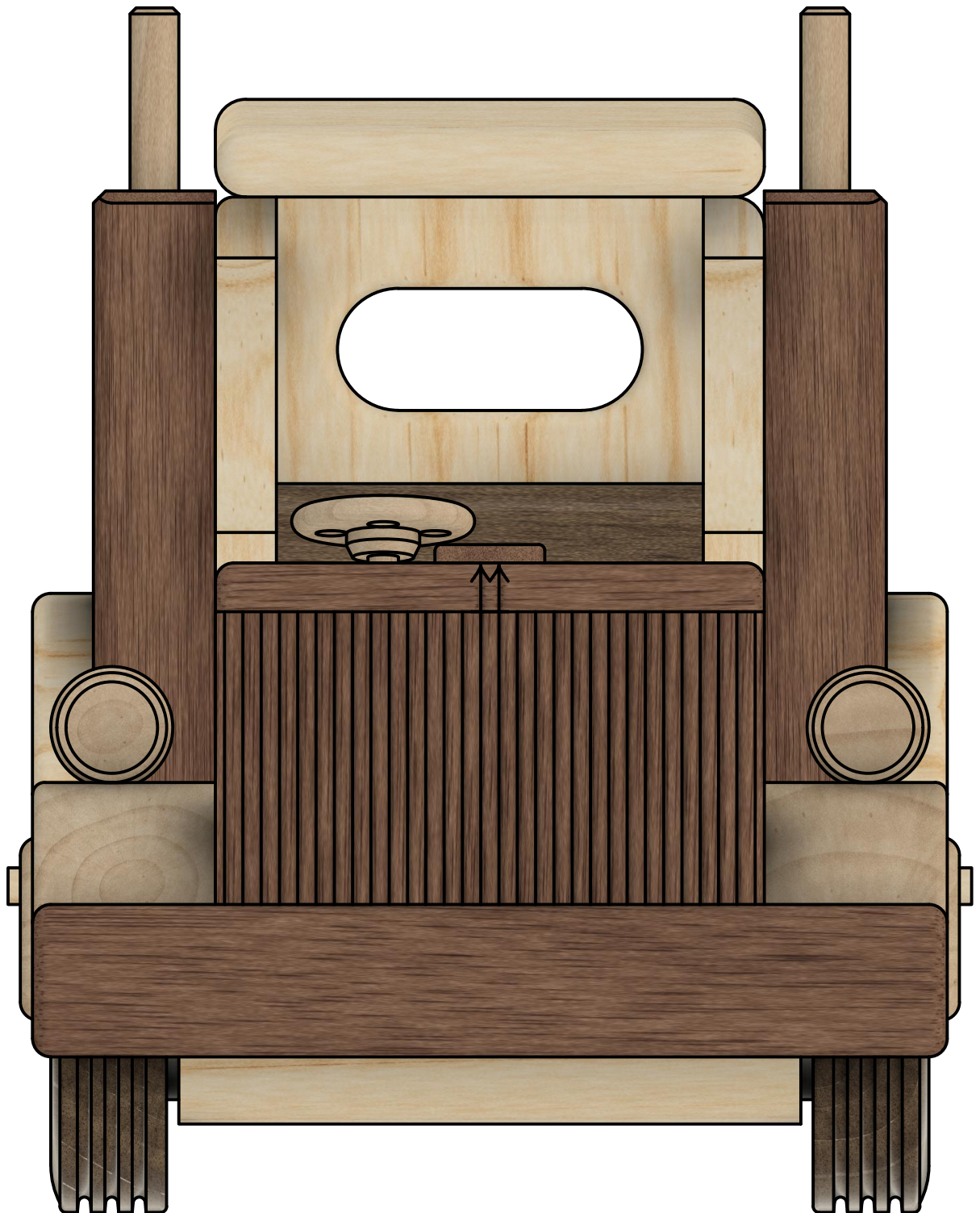
WHEEL 2  $\frac{1}{4}$   
You need 4

NYLON or RVS WASHER 22X8  
You need 8



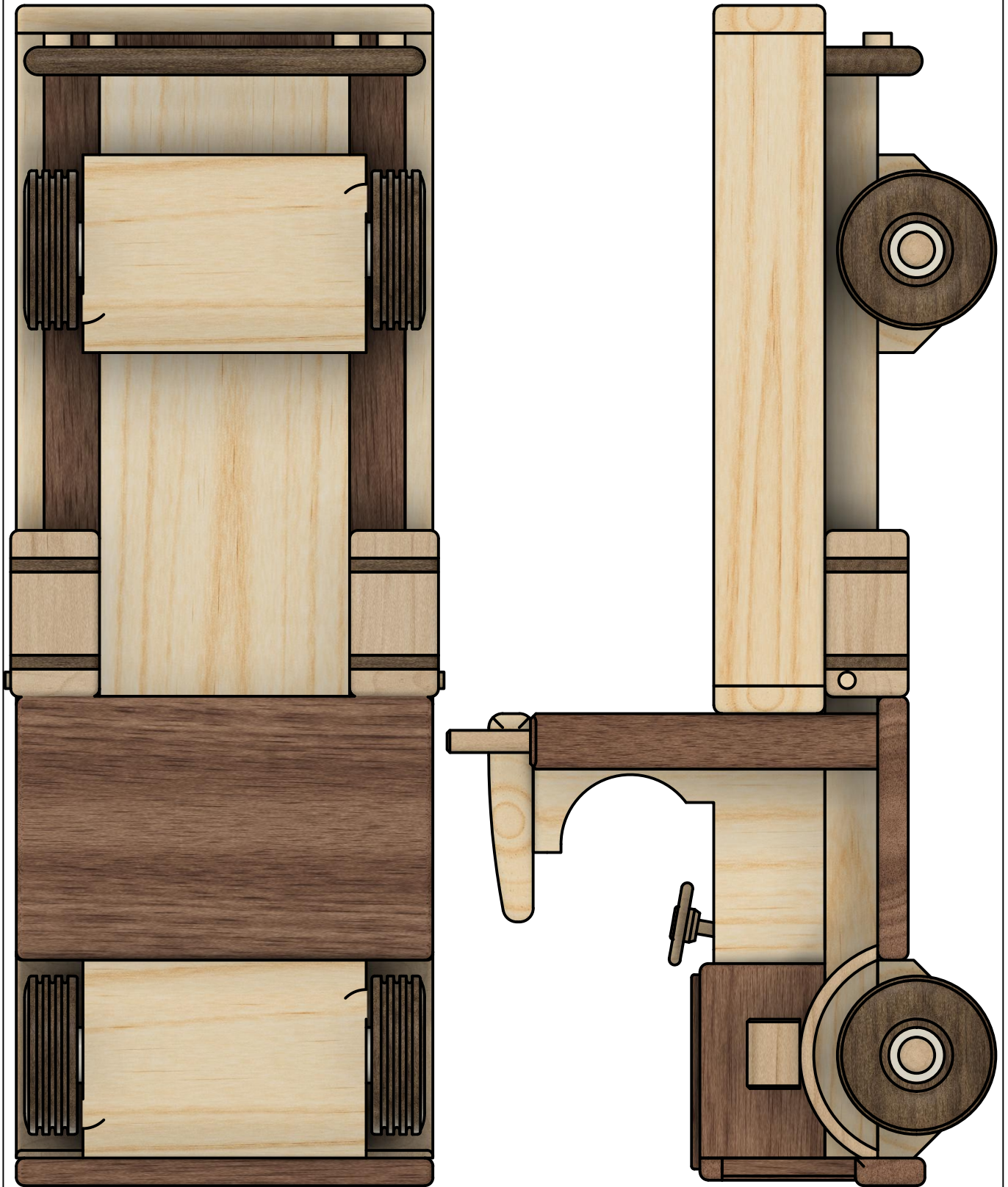
SCALE 1:2

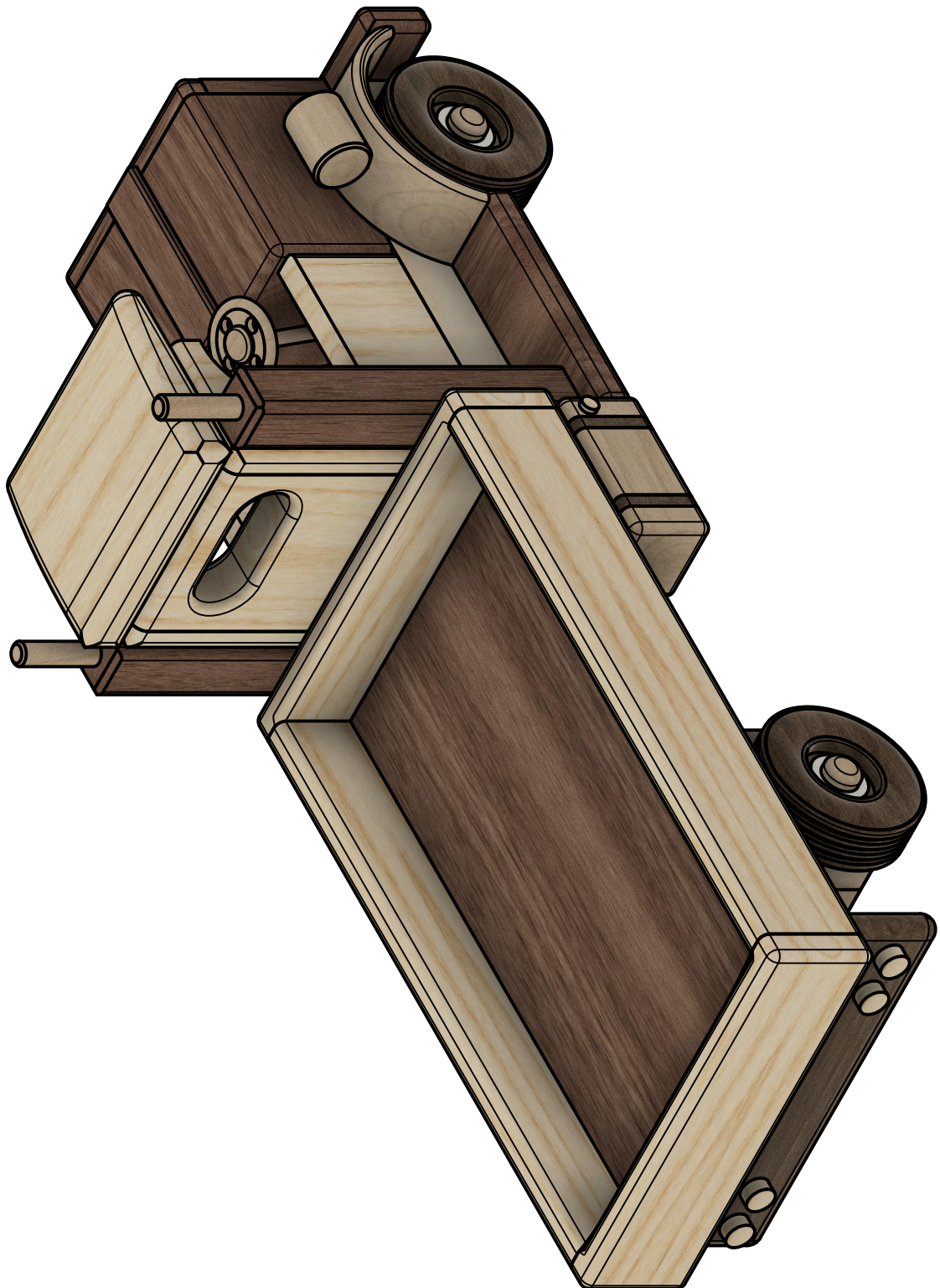




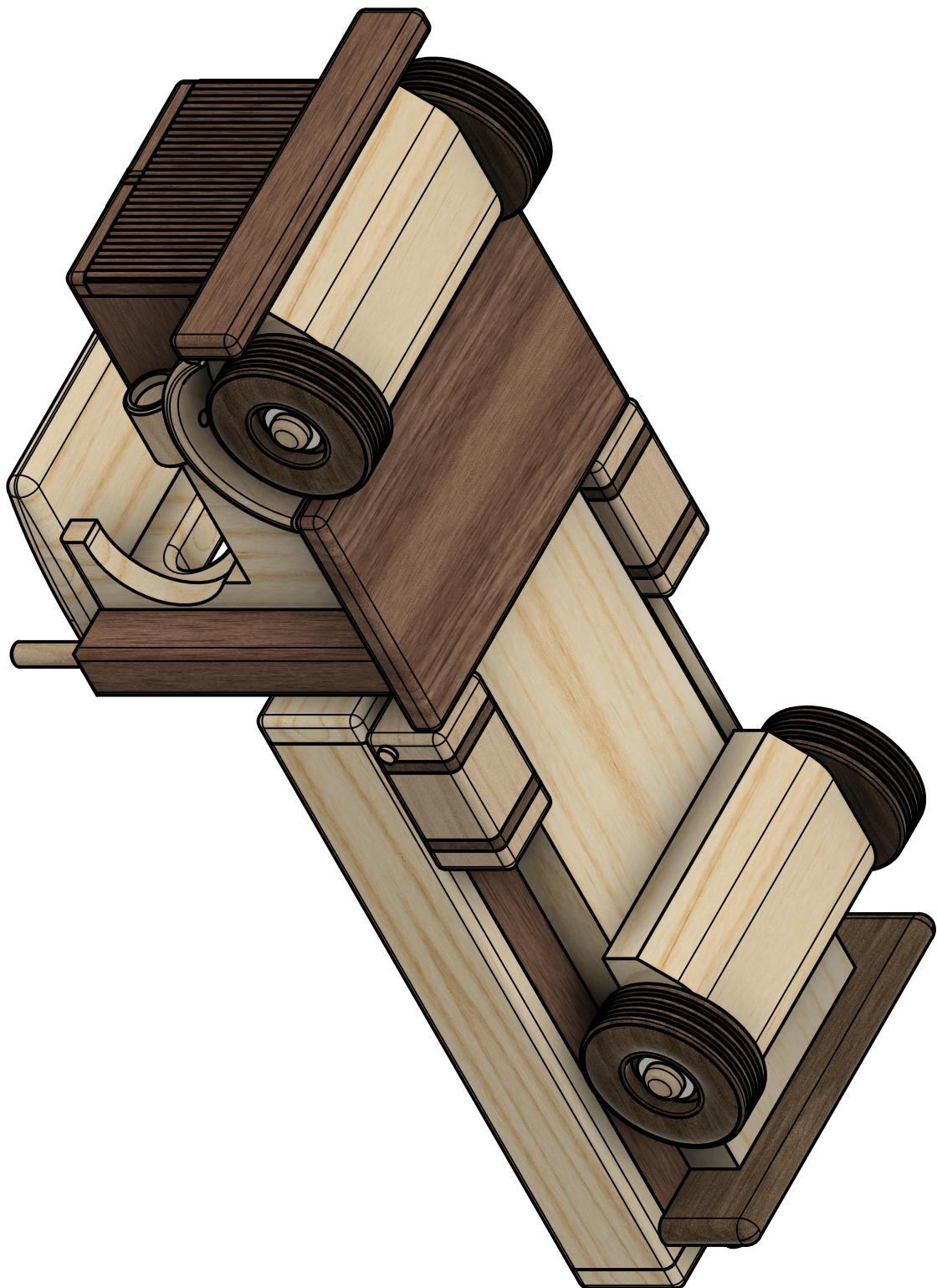


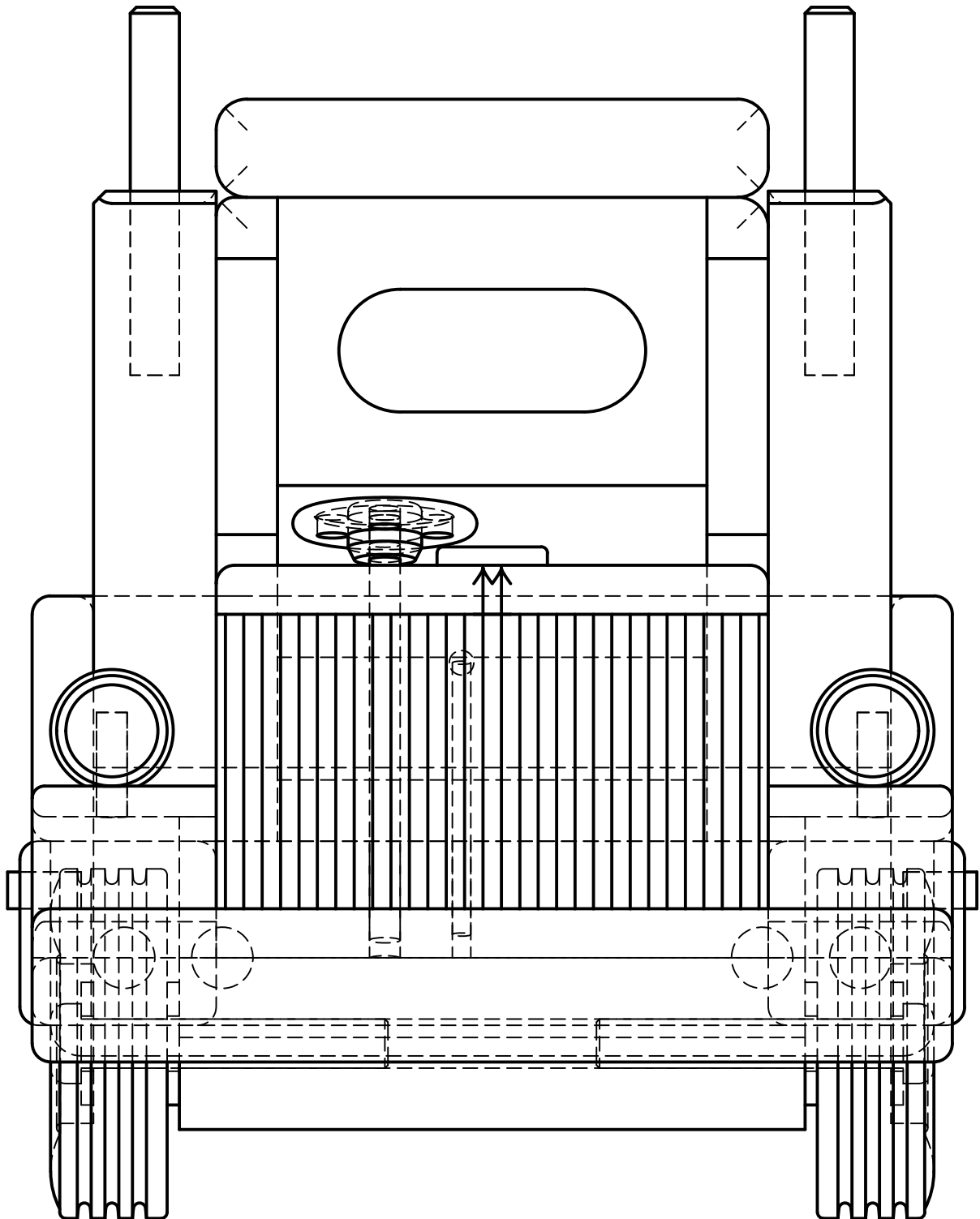
SCALE 1:2













TEMPLATES



Peter's C CAB

Explanation of template number

10D 2    10D 2    10D 2  
Chapter    Part number    Wood thickness in mm.

